

ANNUAL REPORT 2023



Evangelical
Lutheran Church
in America

TRINITY LUTHERAN CHURCH ANNUAL REPORT FOR 2023

Annual Meeting ▪ February 4, 2024

A MESSAGE FROM PRESIDING BISHOP ELIZABETH EATON



Dear friends in Christ,

Over the past year we have continued to experience changes in the world around us. Even as our church finds ways to adapt to this changing world, we find hope in the unchanging and always present promise of God's love through Jesus Christ. We change and adapt not to conform to the world but because we believe that the gift of God's Son is for the world, and that our congregations and worshiping communities are places to gather and be sent into the world, where we will tell the story of God's love in word and deed.

The ministries of our congregations, our synods and the churchwide organization provide ways for the church to move beyond the boundaries of structures and geography and to share God's love with people in our neighborhoods, our cities, our country and beyond. We engage in this ministry knowing that our church walks by faith, trusting in God's promise in the gospel, and that we exist by and for the proclamation of this gospel word. In John 15:5, Jesus reminds us, "I am the vine; you are the branches. Those who abide in me and I in them bear much fruit, because apart from me you can do nothing." We are connected by the promise that we do all through Christ and can do nothing apart from him.

God gives the Holy Spirit, who uses gospel proclamation — in preaching and sacraments, in forgiveness and in healing conversations — to create and sustain this faith. Just as we rely on God to sustain our faith, we rely on each other to sustain the ministries that offer God's love to the world. Through your generosity to each expression

of this church — your congregation, your synod and your churchwide organization — you add to our collective voice proclaiming God's love for all.

I am grateful for your generosity over this last year. My gratitude spreads far beyond your generous financial gifts. You've shared your gifts of time through countless hours of volunteering, serving and accompanying. You've shared the gifts of your voices as we've tried to discover and learn how God is calling us to be the church now and into the future. And, finally, dear church, you have shared the gift of the realness of God's love with the world around you. Be well, dear church, and stand steadfast in the promise of God's love and grace as you take that promise with you into the world.

The Rev. Elizabeth A. Eaton
Presiding Bishop
Evangelical Lutheran Church in America

“I am the vine; you are the branches. Those who abide in me and I in them bear much fruit, because apart from me you can do nothing.” —John 15:5

ANNUAL CONGREGATIONAL MEETING

OPENING LITURGY

Son of God, Eternal Savior

Recognizing that our faith is a living, busy, active and mighty thing, may the grace of our Lord Jesus Christ and the communion of the Holy Spirit be with each of you.

And also with you.

Teach us to love you with all our heart, soul, mind and strength.

Receive our prayer, O God.

Descend on our hearts, that we may love others in the ways Jesus loves us.

Receive our prayer, O God.

Empower us to be enthusiastic in pursuing your vision for our congregation.

Receive our prayer, O God.

Move us to engage issues in our community in Christlike ways, and to pursue deep and authentic relationships with those with whom we serve and partner.

Receive our prayer, O God.

Strengthen us to face the barriers we encounter in doing your work, learning to work with others amid disagreement.

Receive our prayer, O God.

Give us the ability to adapt to the cultural, economic and social changes that occur in the neighborhoods we serve.

Receive our prayer, O God.

Guide us to be a healthy congregation that learns from its failures as well as its successes and offers wisdom to others.

Receive our prayer, O God.

As we strive to become the church that we proclaim to be, raise up leaders who focus on the gospel of freedom, forgiveness and reconciliation as given to us through God's indescribable act of love in the death and resurrection of Jesus Christ. Renew us daily in our baptism, that we may discover vitality in our relationships with you, each other and those we serve in the world.

Amen.

1 Son of God, e - ter - nal Sav - ior, source of life and truth and grace,
 2 As you, Lord, have lived for oth - ers, so may we for oth - ers live.
 3 Come, O Christ, and reign a - mong us, King of love and Prince of peace;
 4 Son of God, e - ter - nal Sav - ior, source of life and truth and grace,

Word made flesh, whose birth a - mong us hal - lows all our hu - man race,
 Free - ly have your gifts been grant - ed; free - ly may your ser - vants give.
 hush the storm of strife and pas - sion, bid its cru - el dis - cords cease.
 Word made flesh, whose birth a - mong us hal - lows all our hu - man race:

you our head, who, throned in glo - ry, for your own will ev - er plead:
 Yours the gold and yours the sil - ver, yours the wealth of land and sea;
 By your pa - tient years of toil - ing, by your si - lent hours of pain,
 by your pray - ing, by your will - ing that your peo - ple should be one,

fill us with your love and pit - y, heal our wrong, and help our need.
 we but stew - ards of your boun - ty held in sol - emn trust will be.
 quench our fe - vered thirst of plea - sure, stem our self - ish greed of gain.
 grant, oh, grant our hope's fru - i - tion: here on earth your will be done.

Evangelical Lutheran Worship, 655

Text: Somerset C. Lowry

Music: IN BABILONE, Oude en Nieuwe Hollandse Boerenlities en Contradansen, 1710;

arr. Julius Röntgen

Text and music are in the public domain. May be reproduced without restriction.

Through your generosity, God is at work across the ELCA. A portion of your offering, called Mission Support, advances the ministry of our church, helping the ELCA nurture Christian community, raise up leaders, serve our neighbors and strive for justice. Read stories and learn more at ELCA.org/SOFIA.

2023 Ministry Reports

Pastors' Messages to the Congregation	5
President's Message	6
2023 in Photos	7
Team Goals	14
Team Accomplishments	15
Trinity Center / Release Time Report	21
Master Planning / Facilities Planning Committee	27
Endowment Funds	32
Women of the ELCA (WELCA)	33
Cemetery Association	33

2023 Ministry Statistics

Pastoral Acts and Statistical Report	34
Memorials	35
Mission Disbursement Summary	36

Other Reports

SEMN Synod Ministry Report	37
Good Earth Village	38
Lutheran World Relief	39
Crossroads Campus Ministry	41

2023 Financial Reports*

General Fund	43
Special Accounts	50
Youth Account	53
Heritage Endowment Treasurer's Report	55
Mission Endowment Treasurer's Report	56
Scholarship Endowment Treasurer's Report	57
All Endowments Report	58
Women of the ELCA (WELCA)	59
Cemetery Association Treasurer's Report	60
Program Budget	61
Itemized Budget	62

Annual Meeting

Agenda	66
2023 Annual Meeting Minutes	67
2024 Preliminary Ballot	68

* Many thanks to our auditors, Sheri Allen and Autumn Wiste, for their time and work!

Then Jonah prayed to the Lord his God from the belly of the fish, saying, "I called to the Lord out of my distress, and he answered me; out of the belly of Sheol I cried, and you heard my voice. You cast me into the deep; into the heart of the seas, and the flood surrounded me; all your waves and your billows passed over me. Then I said, 'I am driven away from your sight; how shall I look again upon your holy temple?' The waters closed in over me; the deep surrounded me; weeds were wrapped around my head at the roots of the mountains. I went down to the land whose bars closed upon me forever; yet you brought up my life from the Pit, O Lord my God. As my life was ebbing away, I remembered the Lord, and my prayer came to you, into your holy temple." Jonah 2

Beloved Trinity family,

We continue to focus on the Bible in Confirmation class during our Winter and Spring quarters. So far, we've made it through most of the Old Testament major figures. Coincidentally, texts from Jonah were featured in the lectionary for the third Sunday after Epiphany (just a week ago), and we also focused on Jonah in confirmation last week.

The Book of Jonah comprises just four short chapters – easily readable in a few minutes – but it's a powerful story of calling, refusal, redemption, and evangelism. When God first calls Jonah to preach to Ninevah, capitol of Assyria, Israel's arch enemy, he runs! Next comes the boat, the storm, the "whale," and the above passage – Jonah's confession to God that he can't sink any lower. And who could, in the belly of a large fish?! But God hears his prayer. As God hears all prayers.

Jonah gets a second chance, and he makes the most of it. As a result of his words to the Ninevites, all are saved from destruction, from the king on down. Even the animals repent and are saved!

Thanks be to God for second chances!

We have done amazing things this year! We have given generously to the Synod, to victims of last December's fire, to the students of Nola Nackerud through our Missionary candle, and the victims of the Maui fire and Florida hurricane.

We also completed phase 1 and began phase 2 of our historic stained-glass window restoration and steeple repair. In April, I will celebrate my sixth anniversary as your lead pastor. It is a blessing and a privilege to serve Trinity.

What is God calling us to do in 2024?

God bless you!

Pr. Elizabeth



"I am sending him to you for this very purpose, to let you know how we are, and to encourage your hearts."

Ephesians 6:22

Thank you for the opportunity to continue my ministry to people who are unable to attend worship services. I always try to bring a word of hope from the Trinity Congregation as I represent you to housebound members. I started this year with 15 on my list. I try to get to everyone each month. Since then my list has grown to 22. It ebbs and flows depending on life's circumstances.

I met with the Sabbatical Committee in October. It was decided that I will fill in for Pastor Elizabeth when she goes on Sabbatical June through August this year. When the meeting was about to end, it was brought up that there will be a Youth Gathering in July of 2024. I was asked if I would lead that activity. I agreed. We have 13, possibly 14, youths who have signed up to attend the Gathering. We are working on fundraising for this event.

In November I agreed to fill in for some of the other youth activities while the church continues to try and find a Children, Youth, & Family Director. So I am working on Sunday School, Release Time and Wednesday Bible School. We have 12 students who attend Wednesday Bible School, 90-100 students who attend Release Time. We had a good representation of students who took part in our Christmas program, thanks to Mary Zaffke, Rachel Storlie, Charity Schroeder and Autumn Wiste and the Confirmation students who filled in. A big thank-you to our Sunday School teachers: Charity Schroeder, Hope Turner, Jada Strinmoen, Madison Lile, and Harper Myrah for their continued ministry.

We had a great year of maple syrup! It continues to help fund our youth and family ministry. We sold all the syrup this year! We will make more this spring,

I thank God for all of your support,

Pastor Lane

CONGREGATION PRESIDENT'S MESSAGE

Thank you for the opportunity to be Trinity's congregation president. It has been a wonderful experience. I am blessed to have a dedicated staff and council to work alongside. They have made my job easy by being so hard-working.

We as a congregation are still in the process of recovering from the COVID pandemic. Even though there are many people attending church each weekend, there are a smaller number of people choosing to attend church in person. We are grateful for the opportunity to worship through Facebook and the radio, but I'd like to challenge you to remember that we also need each other along with God and that the fellowship is important to give and receive. The faith journey is much harder if done alone.

We are a strong congregation as shown by our giving. Much was done by us this year. Over \$13,000 was raised and given out to victims of the Mulqueen's Hardware Store fire. The Thankful Gifts project raised more this year than it ever has and several large church building projects were done or are in the process of being done with the money already available and set aside to complete them. The south windows are done and look great, most of the west windows have been taken out and repaired and replaced with the others set to go soon, and the steeple is sporting a temporary blue roof as it is worked on. The Little Free Pantry has been well-used throughout the year supporting the people who need the help.

The Education Team and the church staff has had a difficult fall since our youth director moved on to a different job. They are finding that there is much to do as they take over those duties. Pastor Lane has been hired to temporarily fill the youth director position as we continue to look for a permanent leader. If anyone feels a call to help with the important job of educating our young people, please let those working in this area know. They would love to have you join them. Many more people were involved with several other projects of the church than what was just mentioned and I thank those doing the work for their time and efforts.

We did not make our general budget this year, but that was more than offset by the giving to the Special Accounts and I am sure that we can continue to be a viable asset to the work of God.

God bless all of us as we work to do the will of God with our actions in the coming years.

Thank you, Kim Kapplinger



Trinity Lutheran Church

203 E. Main Street • Spring Grove, MN 55974
trinityspringgrove@gmail.com • www.trinitysg.org

Trinity Staff in 2023

Lead Pastor: Elizabeth Hermeier

Visitation Pastor: Lane Zaffke

Director of Children, Youth, & Family Ministry: Kerri Jahnke
thru September 15, 2023

Office Admin: Marlene Deschler

Office Admin: Stewart Storlie

Bookkeeper: Nicole Krenzke

Custodian: Gary Wilhelmson

Organist: Rachel Storlie

Pianists: Linda Gjerdrum, Rachel Udstuen

Choir Director: Scott Solberg

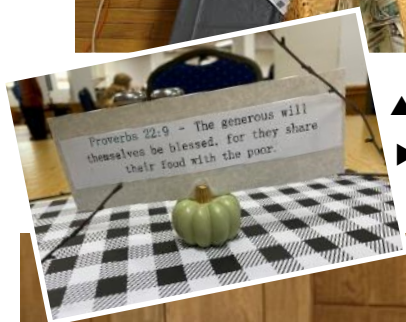
Praise Band Leader: Mark Udstuen thru May 2023

Handbell Director: Mary Deters coordinator thru August 2023,
Demitre Ellis was hired beginning September 2023

Technology Lead: Rick Sundet



Baptisms



▲ Empty Bowls Meal
► Palm Sunday

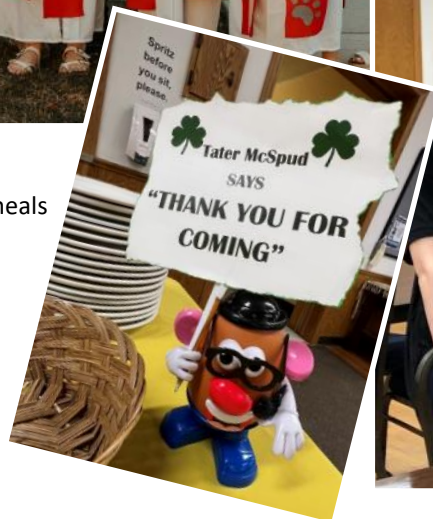




April 2023 Trinity Lutheran Confirmation Class



Lenten meals





◀▲ Vacation Bible School and Day Camp

▶ Helping Hands School Supply Drive

▼ Art as Prayer



Bonfires for youth





◀ Painting the women's lounge.

▶ Cleaning office cupboards and painting Middle Room.

▼ Madison Lile painted a floral mural.



▼ First Communion
Delicious maple syrup



We ♥ kiddos!



◀ Graduating high school seniors.

▼ Wednesday Bible School



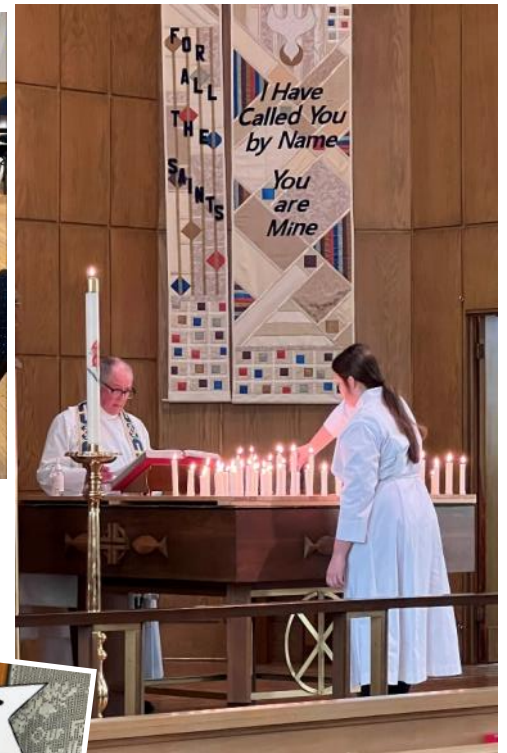
A BIG NIGHT IS COMING!

TRINITY WILL BE STREAMING THE BOYS' BASKETBALL GAME ON THE BIG SCREEN.

ALL ARE WELCOME!

5:00	GAME
6:15	SUPPER
7:00	WORSHIP





◀ Fall Meatball Dinner

▶ All Saints Sunday



Cross and brass cupola from steeple





▲ Youth making Thanksgiving Pies ▼ Worship Team
 ▲ Sunday School Christmas program ► Christmas Cheer packages
 ▼ Christmas Concert ▲ Advent reader



TRINITY TEAMS TOGETHER IN MISSION

STATEMENT OF IDENTITY

As people created by God, we live in gratitude for God's many gifts, and rejoice that:

- God forms us into a community in which we worship, pray, hear God's Word, share in the sacraments, confess our sin, receive forgiveness, and live in the unbounded grace of God;
- God calls us to be disciples of Jesus Christ, to grow in faith over our lifetime, and to share the good news of Jesus with all people;
- God equips us through the Holy Spirit to be the hands and feet of Christ in the world.

OUR VISION

By the grace of God in Christ, we live in peace and joy, connected to God and to one another, to further God's work on earth.

OUR MISSION

As a Christian community we spread the Good News, grow in faith, discover and use our gifts to serve God, and care for all people.

WE DO ALL OF THIS THROUGH OUR CONGREGATION TEAMS AND COMMITTEES

Executive Committee

The Executive Committee consists of the current president, vice-president, secretary, and treasurer, and may meet between the regular meetings of the council if there are agenda concerns to address or planning to be done. The pastor(s) are *ex officio* members of the executive committee.

Team Leaders and Team Members

The ministries of Trinity Lutheran Church shall be carried out through ten teams: Care, Communication, Education, Finance, Mission in the World, Outreach, Property, Staffing, Stewardship, and Worship. Team members are elected by the congregation for two-year terms, and may succeed themselves two times. The mission, vision and goals of each team evolve to meet the needs of this congregation and community. These guidelines, approved by Congregation Council, are specific yearly goals that can be found in the team guidelines within the policy and procedures manual.

- **Care** - Listen, respond, care, serve and pray for others.
- **Communications** - Develops and implements a communication plan that supports the vision, mission, and goals of the congregation.
- **Education** - Develop life-long faith formation and Christian discipleship so that people are equipped and supported to share the Good News in Word and Deed.
- **Finance** - Produce an annual budget, monitor income and expenses that support the congregation's goals and objectives. The treasurer of the Congregation Council is a non-voting member and attends Finance Team meetings and submits monthly financial reports to Council for review and approval.
- **Mission in the World** - Spread the Gospel of Jesus Christ by supporting local, national, and international ministries.
- **Outreach** - Develop faith-forming relationships within our homes, congregation and communities.
- **Property** - Oversee the care, management, and maintenance of all properties of the congregation subject to Congregation Council approval; serve in a liaison and oversight relationship with the custodial staff; review maintenance contracts (snow, lawn, etc.); recommend needs regarding purchases of equipment, supplies, and maintenance services; review insurance coverage for all properties; inspect all properties on a regular basis to assess the safety, efficiency, appearance, and good order of all church property. The Trinity Cemetery Association will be totally responsible for the administration and maintenance of the active West Side Cemetery.
- **Staffing** - Maintain supportive relationships with the pastor(s) and lay staff. Develop and review job descriptions, perform annual appraisals and coordinate with the Council salary increases. Be a part of the interviewing and hiring of new employees following the guidelines of the Hiring Committee Policy and conduct exit interviews with staff. Monitor areas of concern within the congregation related to pastoral care or ministry.
- **Stewardship** - Develop and implement a plan to encourage and demonstrate the faith formation of being stewards of God's benevolence. Implements and oversees the Gift & Memorial Policy, encouraging gift giving to Trinity Church.
- **Worship** - Praise God through vibrant cross-generational worship in our homes, congregation and community, thereby shaping daily life in the grace, mercy, and peace of God in Christ by: 1) Enhancing indoor and outdoor spaces to make them vibrant and welcoming. 2) Deepening worship experiences through music. 3) Planning and designing worship opportunities for the year.

CARE TEAM

We are making a difference!

On December 9, our team packed and delivered 54 Christmas Cheer packages. The yummy foods included were: hams, scalloped potatoes, crackers, cheese, cereal, oranges, apples, candy, pancake mix, and Zaffke's famous maple syrup. We purchased Red's grocery cards and fleece throw blankets.

We pack foods for weekends for school kids. We pack 20 now....a nice increase. This is called HIP (Health Initiative Program) and the bags include 2 breakfast items, 2 lunch items, and 2 snacks. We learned how to do bulk orders from Red's to save on costs.

Our Little Free Pantry is well-used. Costs can range monthly from \$200-\$600, with some months of high use and others less used. Our sign says "Take what you need, give what you can." If you leave donated foods for the pantry, please leave updated foods. We do not put past date foods there.

I have enjoyed my 9 years on Care Team. While our members have been women, we also have our partners helping us. This team is a good fit for men, so please consider joining it. Call the office and let them know. We are in search of the new leader of the Care Team and when you read this, I'm sure someone will be in place.

Thank you to my team: Kathy Anderson, Karen Folstad, Betty Bergsgaard, Joyce Bergrud, Kris Bjerke, Autumn Wiste, Roxie Finnesgard, Angie Berns

Best regards, *Laurie Moen*, Care Team leader

COMMUNICATIONS TEAM

"Encourage one another and build each other up, just as in fact you are doing."

1 Thessalonians 5:11

Thank you for another year of serving you as your Communications Team. We are Milly Halverson, Hope Turner, Lara Wold-Mendez, Saundy Solum and Mary Zaffke. We welcomed this year, two new members, and will say good-bye and thank you, to Milly and Hope, who have served their terms on this team. They are moving on to serve in other ways.

The Communications Team duties are to promote effective communication within Trinity Lutheran Church and with our community to support the vision, mission, and goals of the congregation.

Our team's responsibility is made much easier because we have great church office staff! We are happy to be able to help when Marlene is not able to take pictures of events at Trinity, because of her own conflicts. Did you know that most all those photos are primarily contributed by Marlene? She uses them for the church newsletter, or bulletins, etc. It is an easy thing to help support her work in this way.

We tried something new this year, hoping to build on the theme of how we communicate our faith, and held an evening workshop called, Art as Prayer, with watercolor artist, Mary Thompson. It was very well attended and we had hoped to have another class, but the artist had some conflicts this fall. We will continue to look to plan something in the spring. This summer we fed homemade donuts to bikers from a group called Bicycle Around Minnesota. They also got a cute key ring, that Marlene designed. This was done with the support of a variety of curious and able bodies, Outreach Team members, and additional Trinity members. It was really a great way to show hospitality to the stranger in our midst. We might have made a pretty big impression on the group for being the friendliest town.

Our team continued to work on mailing cards to members of our church family and beyond. We hope that we will get better at this. It is our hope that we can get word back of the ways that God has supported people through their illness.

We were also able as a team to serve food at Trinity events, such as the Heritage Celebration, Lenten Suppers, coffee fellowship and more. The Prayer Shawl Ministry was moved to the Communications Team in December. Care had been in charge of this ministry project but it was determined to be a good fit for our team. Thank you, to the Care Team for your work with this project. And special thank you to Barb Morken and JeanAnn Tweeten, who lovingly supply the hand made shawls.

We have some great ideas for 2024 and are looking forward to what is ahead! Our prayer continues that each of you feel, through your interactions with our church, that we are communicating the love of God and neighbor, Peace be with you.

Mary Zaffke, Communications Team Lead



EDUCATION TEAM

We are in a time of transition with Kerri Jahnke leaving her position this past September as the Director of Children, Youth, and Family Ministry. We continue to pray that the search for a new Director of Children, Youth, and Family Ministry will be successful.

Through 2023, we continued with Wednesday Bible School for 3rd–6th graders, Sunday School for Pre-K through 2nd graders and Confirmation for our 7th and 8th graders. A special thank you to those who have assisted in filling in teaching roles: Pastor Lane Zaffke, Pastor Len Liptack, Jada Strinmoen, Madison Lile, Harper Myrah, and Charity Schroeder. Thank you as well to Tammy Petersen for her coordination and preparing of Confirmation meals this fall.

We served 530 meals from the Syttende Mai Meatball Dinner youth fundraiser in May. We raised \$5,000 for the youth ministry trip account.

We confirmed 10 youth in April and 8 youth in October.

Youth presented the Sunday School Christmas program, “The Greatest Gift,” under the direction of Charity Schroeder, Mary Zaffke, and Rachel Storlie.

WELCA supported our 7th grade youth to Confirmation Camp at Good Earth Village last summer. Thank you to the WELCA group for your support.

Pastor Lane, youth, and chaperones are planning and preparing for the 2024 ELCA Youth Gathering being held in New Orleans in July.



Wednesday Bible School

Education Team

Bethany Moen (team lead), Bev Nelson, Tammy Petersen, Jessica Kraus, Jessica Sherburne, Deanna Solum, Bonnie Solberg, Pr. Elizabeth Hermeier and Pastor Lane Zaffke

FINANCE TEAM

Trinity Church has two major accounts with many subaccounts under these two accounts that the Finance Team monitors on a monthly basis. The first major account is the General Income/Expense account which includes the general giving income received each week and the expenses to support the functioning of the church. These expenses are primarily payroll, utilities, office supplies, ongoing property maintenance, and debt retirement. The second major account is called Special Accounts and there are several ongoing categories that congregation members designate their giving choices to such as: stained glass windows, steeple repair, building fund, radio/media broadcast, music, Good Samaritan, Little Free Pantry, and alternative giving to name a few. Nicole Krenzke, Trinity's bookkeeper, enters the information into our QuickBooks program each month and submits reports to the Finance Team who reviews them and then the reports are submitted to Trinity's monthly Council meeting. You will see the audited accounts in this Annual Report. Also included in the Annual Report is the budget for 2024.

During 2023 the Finance Team took advantage of the increased interest rates of Certificate of Deposits and Money Markets at the New Albin Savings Bank in New Albin, IA by transferring monies. Trinity is protected with FDIC insurance since the deposits at Merchants in Spring Grove and at New Albin Bank do not exceed \$250,000 in either facility.

Gratitude for serving on the Finance Team this past year is extended to Barbara Arnold, Kathy Overland, Kari Alstad, Lorilyn Dehning, and JeanAnn Tweeten. Steve Nelson has supported the Finance Team as Treasurer for Trinity and Pastor Elizabeth attended many of meetings to lend insight for recommendations.

Respectfully Submitted

Jacque Wennes, Finance Team Lead

MISSION IN THE WORLD TEAM

The Mission in the World team is thankful for the gifts from the congregation to help support ministries throughout the world.

This year, we again coordinated the Thankful Gifts catalog which was available during the Advent season.

The “Noisy Offering” of \$321.21 was designated to missionary Nola Nackerud.

The 2023 income from the Missionary for a Day candle was also designated to missionary Nola Nackerud.

Thankful Gifts catalog project:

- Alternative Gifts International: \$5,451.00
- ELCA Good Gifts: \$3,655.00
- Lutheran Partners in Global Ministry: \$1,577.00
- Trinity Little Free Pantry: \$471.00
- Houston County Food Shelf: \$100.00
- Red's IGA \$25 Gift Cards: \$125 (5 cards) Trinity Good Samaritan Fund
- Kwik Trip \$25 Fuel Only Gift Cards: \$150 (6 cards) Trinity Good Sam. Fund
- GRAND TOTAL: \$11,526.00



Last fall, we loaded and transported boxes of layettes, quilts and school kits to La Crosse, for Lutheran World Relief. There were 74 quilts, 200 baby care kits, 88 personal care kits, and 204 school kits. We also transported boxes from Faith Lutheran Church of Black Hammer. Thank you to Gary Wilhelmson for hauling all of these boxes.

Team Members: *Karen Gray, Naomi Pollock, Jen Solberg, Stewart Storlie, David Storlie (Team Lead)*

OUTREACH TEAM

The Outreach Team consists of Barb Gulbranson, Elain Kjome, Jessi Strinmoen, Janice Messner, Karry Thorson, Terry Holland, and Kelly Eilers. However, Kelly left us later in the year as her family transferred out to another congregation.

Our responsibilities for 2023 were varied, fun, and challenging! We start with the coffee servers after services. Thank you Elaine for taking on that part of our service. We assisted other teams serving for special coffees after church services.

Karry took care of keeping the Lions Den Clothing Corner at school stocked with clothing for students. That is a continual responsibility not only for Karry, but for the entire congregation to help raise.

We had two Empty Bowls events this year! One was in the spring as we did not have one before due to Covid. We raised more than \$300 going to the Houston County Food Shelf and more than \$500 in the fall benefiting Sunrise Care Facility.

In July and August we prepared and helped with Helping Hands Backpack Drive for school kids which took place in Caledonia and served the entire area. We served a Community Picnic in the Park on a Wednesday evening which benefits the Lions Den Clothing Corner.

Thank you for the opportunity to work alongside of you through the past year.

Terry Holland

Outreach Team Lead



Community Picnic

PROPERTY TEAM

The list of maintenance projects that were addressed this year at Trinity and its properties.

PARSONAGE:

Virtually no maintenance this year, just adjusted front door handle and dead bolt.

TRINITY CHURCH:

Main Street stained glass windows completed (look beautiful) and the west-end windows are in progress and should be completed in the spring of 2024.

Steeple work started in November 2023 with removal of old slate, cupolas and ornaments. Sealed with water and ice barrier to make it water tight. Cupolas and ornaments should be in the process of being made which will take about six weeks to complete. The weather may dictate completion date once the cupolas and ornaments are ready. I am anticipating by the end of April, but hopefully sooner.

Rain water was redirected off of the elevator entrance, west side.

Bruce Bergsgaard installed new ground rods for the steeple and reattached them at no cost. Thank you Bruce.

Two windows in the women's downstairs bathroom were replaced with double pane impact resistant glass. Work was performed by Tim Ladsten.

Renewed snow removal contract for church properties with Tim Ladsten.

Ron Hammes replaced thermostat on refrigerator in kitchen. It has been working fine, (circulating fan is meant to run continuously).

New door actuator installed at elevator entrance.

New contract with Richard Sanitation for waste removal at about \$920.00 per year (\$76.71 monthly). Previous year (2022) cost with Waste Management was about \$6,000.00!!!? (we saved some money)

Unused chimney demolition to be starting soon.

TRINITY CENTER:

Grove Plumbing, Dave Eiken, found replacement parts for the old boiler and it has been working as it should. Cost of this was about \$4,500.00 which included a used gas water heater, one new toilet and labor. Thank you Dave!

Installed new toilet and replaced privacy enclosure to make it more handicap accessible for users in men's bathroom.

In women's bathroom, both toilets were removed along with enclosures and replaced with one toilet (replaced by Bruce Bratland) and a new enclosure to make it handicap accessible. Privacy enclosure was installed by Gary Wilhelmson, Lee Hoekstra, and Jerald Oakes. This floor was cleaned and resealed by Richard Sundet. Walls were repainted by Gary Wilhelmson and Scott Kellogg.

Lee Hoekstra also did some painting and a lot of cleaning and disposal of unneeded things.

Lee Hoekstra and Gary Wilhelmson removed playground fence and moved playground equipment to the church.

A key lockbox was installed.

Two new outside lights at front entrance were installed by Bruce Bergsgaard.

Thanks to Gary Wilhelmson, Lee Hoekstra, and Richard Sundet for their work on many projects. To Dave Eiken for his work at the Trinity Center. We have a great team and value their input over this last year. Thanks to the Property Team members: Jeremy Myhre, David Overland, Dean Wiste, Richard Storlie, Kim Sherburne, and Bruce Bergsgaard.

Respectfully, *Jerald Oakes*, Property Team Lead



STAFFING TEAM

Our Staffing Team continues to support all staff and be involved in coordinating evaluations, giving recommendations for salaries, reviewing compensation, updating benefits, and revising renewal documents for staff each year.

Sabbatical Update Pastor Lane Zaffke will be our interim pastor while Pastor Elizabeth is on Sabbatical leave from June 3rd through September 1st, 2024. Our Staffing Team initiated a contract for this position.

We developed a contract for the Director CYF (Child Youth and Family) Ministry position because Pastor Lane has also taken on the duties of Director of CYF Ministry. He uses his time doing youth work, coordinating the Youth Gathering, class work, and prep work. He helps Pastor Liptack with Release Time classes and Wednesday Bible School. He has graciously offered to lead the students from Trinity Lutheran Church to the ELCA Youth Gathering in New Orleans in July of 2024. We appreciate Pastor Lane for filling in as the youth director until a new CYF director is hired.

Director of CYF Ministry Update Kerri Jahnke resigned in August 2023. Our Staffing Team continues to work diligently to recruit for a new Director of CYF Ministry. We posted advertisements in 3 area newspapers, sent advertisements to 20 local churches and extended our search to 9 colleges.

We also distributed advertisement posters to 4 Campus Ministries. Greg Wennes has kindly gifted the church to run advertisement ads for Director of CYF Ministry on KVIK radio stations. We remain very optimistic and confident that we will find the right applicant in the near future to facilitate our youth Christian education.

Hiring Demitre Ellis was hired in August 2023 as our new Handbell Choir Director. We are very thankful he has become the newest member of our Trinity staff. We looked forward to his meaningful music during our worship services.

Display Picture Case The Worship Team and Staffing Team put up a display picture case. The congregation can view Trinity Staff pictures and each team group picture. This display case is on the first floor by the elevator. Marlene has shared this information on the Trinity church website so members know who to contact.

Trinity church has many dedicated members to thank. A special thank you to Pastor Elizabeth and Pastor Lane for supporting our faith in God and leading a meaningful worship service.

Gary and the office staff for day-to-day operation and keeping Trinity functioning smoothly. Our music ministry for providing a variety of inspirational and special music.

Lastly, our members who serve on teams, committees, choirs, ushers, teachers, and volunteers. We appreciate and recognize how important each individual can impact this congregation with their talents and service.

Respectfully submitted,

Betty Dokken, Staffing Team Lead

Nancy Gulbranson, John Halverson and Danielle Myhre



Kerri Jahnke was the Director of Children, Youth, and Family Ministry through August 2023.



STEWARDSHIP TEAM

During this past year the primary focus of our team was how we can get more members of Trinity to share their time and talents in the mission and ministry of Trinity.

We used the 130th anniversary of our church building as a focal point in encouraging member participation in our ministry. We sent out brochures and invitations to rejoice in what our forbears did for us and respond in kind. We told of the fire that destroyed the first brick church on April 3, 1893. The congregation met three days later with a motion to rebuild. The word “immediately” was somewhere in the motion. They weren’t going to think and stew about it. There were no skid loaders, backhoes, dump trucks or any of the modern equipment we have today, just pick axes, wheelbarrows, scoops and shovels and bare hands loading horse-drawn wagons. Eight months later they dedicated the building we worship in today and for the last 130 years.

We currently have 240 giving units. Like everything else the cost of our mission has gone up and we struggle to fulfill our ministry. Of the 240 giving units, 106 meet 96-97% of the budget and 134 units give somewhere between \$0 and \$500.

Our challenge to our members and congregation is to provide the resources to not only meet our current obligation but to help Trinity expand its ministry. How can we do that?

It has been shown that churches whose members give 2-3% of their income are just getting by. We are somewhere in that category. When giving is increased to 3-4% it has a significant impact on the ministry of their church. Using income figures of our area from the 2020 census, if our top 106 giving units would increase their giving by 1% that could increase our church income by \$60,000-\$90,000. Then if the bottom 134 giving units who are not very active in our church could be encouraged to try giving at the 1% and become more active in worshipping, that could be a significant boost.

We on the Stewardship Team don’t know who you are or what level of giving you fall under. We know there are a lot of generous members regardless of your annual income. Your discipleship in the ministry and mission of Trinity is much appreciated.

Grace, peace and blessing to you all from the Stewardship Team.

Lenny Myrah, Stewardship Team Lead

Joyce Landsom, Peggy Landsom, Kris Rud, Sarah Kroshus, Pete Bergrud, Steve Kemp

WORSHIP TEAM

It has been a busy year for our Worship Team. We, of course, scheduled our communion servers, ushers, communion bread makers, and lectors. We are thankful to have Rachel Storlie on our team to schedule any special music, Rick Sundet for his tech expertise, and Mark Schroeder for the special music he has provided this past year.

This year we decorated for Lent and joined with the Property Team to serve up a delicious baked potato bar for one of the Lenten suppers. We planned a summer outdoor worship service that was to include the Blessing of the Animals, but it had to be cancelled because of inclement weather. We filled the outside flower pots with flowers again this year and struggled to keep them alive with the heat and lack of rain. In the fall we were lucky to get a donation of pumpkins and mums to make a beautiful display at two of the entry doors. This year for Thanksgiving, we chose to use our decorations of baskets to encourage people to fill the baskets with grocery items to be given to our Little Free Pantry. We had a good amount of food items donated. Our Christmas décor this year was over the top, I have to say so myself! This team came together with ideas and church looked beautiful both inside and out. Thank you to all who lent their nativity scenes for display in the Fellowship Hall.

This year our team has tried to “think outside the box.” We had an end of summer display in the church, we added new bulletin boards and signs trying to make people feel welcome when they entered our church. We joined together with the Communications Team and had a Sunday evening wiener roast with some good conversation and treated bicycle riders with the Bicycling Across Minnesota (BAM) ride with homemade donuts. Plus we helped host an Epiphany Party on January 6, 2024. We worked with Stewardship to celebrate the 130th Birthday of our building. We are looking forward to more fun fellowship gatherings and continuing our work as we continue to serve God.

Thanks to the Worship Team for being so great to work with, Lee Hoekstra, Karen Bingham, Jackie Parker, Rachel Storlie, Rick Sundet, and Mark Schroeder.

Lori Wilhelmson, Worship Team Lead





Trinity Center – built in 1967

At the annual meeting held Feb. 5, 2023, motions were made to create a committee to examine the potential sale of the Trinity Center and make an in-depth study on how to enhance Release Time. A committee appointed by the church council and made up of the following individuals met several times: Heather Gray (chair June-now), Michelle Jahnke (chair March-May and member of the Education Team), Andy Allen, Sheri Allen, Karen Bingham, Lorilyn Dehning, Barb Gulbranson, Lee Hokstra, Charity Schroeder, Scott Solberg, Rachel Udstuen, and Gary Wilhelmson.

The committee toured the Trinity Center and discussed the pros and cons of the building and what purposes it has had in the past and what role it could play in the future. Since its inception, it was built and designed to be an educational center for the congregation. It has faithfully carried out that purpose until the winter of 2021-22 when it was shuttered due to issues with the boiler.

Much like members of the congregation, some committee members felt that the building had a lot of life left to give the congregation and the community while others worried that the facility needs a lot of repair and upgrades. Having researched the subject since March, members offer the following items for consideration by the members of Trinity Lutheran Church.

- The overall structure of the Trinity Center is solid according to the firm of Kodet Architectural when Teri Nagel reviewed the structure on Aug. 2. Earlier upgrade of sidewalks and landscaping are good long-term improvements.
- The heating system is now functional with a cost-effective repair of less than \$6,000. This will allow both floors to be heated if needed (although it will require additional operating costs). The heating system is older and not as efficient as a new zoned system. A future upgrade could realize operating savings.
- The bathrooms have been updated with new toilets and stalls resized to make them more accessible. They have also been painted and had a deep cleaning.
- The old kitchen and Beary Patch room allow for community use and different size groups on the main floor. With so many needs in the community, perhaps it could serve as an elder care or mental health hub. There were also discussions about hosting Love Day, Sunday School, Confirmation Classes, and other youth events there. In addition, there could be an opportunity to allow scheduled child / parent visitations.
- The close proximity to the school makes parking a challenge. There are options for consideration such as expanding the parking lot on the east. A sidewalk from the parking area to the back door would also be needed.
- There could be additional upgrades performed. The kitchen could be updated/ relocated for better ease of use. Windows could be replaced, and painting and other items of maintenance and improvement could happen.

Release Time program – established in 1924

Release Time has been a focus of the congregation since 1924 when classes were held in a rented space and had the support of the community and the school. A full timeline of Trinity's dedication to religious instruction is available as a separate handout.

The committee spent much time discussing the current format of Release Time that has been held at the Giants of the Earth Heritage Hall since the fall of 2022. We were informed that classes have returned to the Trinity Center since the boiler is working.

The program currently reaches 121 youth aged kindergarten through sixth grade. Classes are held weekly on Wednesday afternoons with a rotating schedule allowing each grade to meet one hour a month. The format includes songs, Bible stories, prayer, and activities. Since 2017, it has been exclusively led by Trinity's youth director (Bekah Leafblad 2017-2021 and Kerri Jahnke 2021-2023) with teaching assistance by Pastor Len Liptak of Black Hammer Lutheran Church.

The committee discussed the importance that parochial education has been for the Trinity congregation. Members also discussed the modern-day pressures on families and young students making it hard to balance commitments and find time to volunteer, especially for daytime classes. It was noted how much society has changed - attention spans are shorter and so many opportunities compete with religious activities. It was also pointed out that the school's 7th – 12th grade class schedule makes Release Time challenging during the school day.

Many members felt strongly that this meant we need to get more creative in the opportunities we offer our families and youth. A couple of our sessions resulted in brainstorming and great discussion of many ideas that could re-event the program or offer different learning experiences for our youth, our young adults, and adult members.

As an ad hoc committee, we are not charged with creating new programming, but are happy to share a few of our ideas here for further discussion and brainstorming by the Education Committee.

- Continue Release Time in its current rotational format unless enough committed paid staff can be secured to offer it more often than that. A consideration of what classes students are missing must be discussed and worked out with the school as class structures have changed.
- Offer Wednesday family night – after school children could gather at the Trinity Center for after-school activities and games before being joined by their parents for a supper and worship time before the kids split off for Release Time or Sunday School type programming and the parents have a choice of Bible classes or sharing / support group similar to what ECFE used to offer.
- Survey parents and youth as to the opportunities they would like to see – do they want more events during the week to free up weekends for other commitments? Do they want family-friendly classes so everyone comes together at once? Do they want Sunday School during church so afterwards everyone can leave at once?
- Add more opportunities to our young adult programming – both for Confirmation and post-Confirmation. Perhaps focus on monthly events that bring youth together (Trinity youth and their friends) for purpose and fun. An example such as an escape room where Bible clues are part of the game or volunteering at a food shelf or homeless shelter to share their faith and help others.

These are just a few ideas that challenge us all to grow into new areas and try new things. These are not necessarily the answers, but shouldn't we try and fail and try again rather than just give up on our youth and say everyone is too busy?

Timeline: Release Time Program

Reverend Johnson, 1910-1933

1916

Rev. Johnson thought and prayed about a form of religious instruction for many years before it was realized in Spring Grove.

1924

The beginning of the parochial day school in Spring Grove began when Rev. Johnson appointed a temporary parochial school committee for the organization of the school, renting a room, and hiring a teacher.

- Dues were 15 cents per week for one child, with a maximum charge of 50 cents per family. No child was barred from receiving religious instruction through lack of funds. It was available to everyone.

1925

The Religious Education Association was formed.

1927

A decision was made to erect a one-story building for the Parochial School adjoining the school grounds.

1928

- In January, the parochial school building was dedicated.
- In May, the first graduation was held with 11 high-school students and 14 elementary students.
- Students enrolled in the program were from Trinity, Black Hammer, Riceford, Waterloo Ridge, Wilmington, and Highland congregations.

1932

Rev. Oscar Mikkelsen was called to serve as parochial school instructor and to serve as Pastor Johnson's assistant in the work of the congregation.

Reverend Mikkelsen, 1933-1952

Reverend Engebretson, 1952-1957

Pastor Rolf Hanson, Lead Pastor 1958-1971

1958 Almore Mathsen hired as a Lay Assistant. He served until his retirement on 1/01/2006.

1966

A congregational meeting was held on May 31 to discuss the future scope of the educational activities and how much money should be spent to make available space and atmosphere for instructing our youth.

- Approved the immediate construction of a parochial school building – the Trinity Center.
- The old parochial school building was sold to the school district.
- Architects were engaged to draw up plans for the new building on property that the congregation had purchased in 1959.

Pastor Ken Knutson, Lead Pastor 1971-1985

1970's

In July 1972, Pastor Knutson suggested a re-evaluation of parochial school, Sunday school, and teacher training. Area churches were invited to a meeting to discuss the parochial school classes.

- In October 1974, the Trinity Center was open on Friday nights after games until 12 a.m.
- In March 1976, Mr. Mathsen met with the church council to answer questions concerning the Release Time program. By resolution, the council showed support for the program.
- In August 1976, tuition was set at \$15 for 1 child, \$20 for 2 children, \$25 for 3 children, and \$30 for 4 children.
- Grades K-6 attended Release Time twice/week for 1 hour
- Grades 7-12 attended Release Time once/week for 1 hour

1980's

Twenty-four teachers served the Release Time program from 1955-1980.

- Grades K-6 attended Release Time twice/week for 1 hour
- Grades 7-12 attended Release Time once/week for 1 hour

Pastor Harry Mueller, Lead Pastor 1986-1991

1990's

- In June 1993, changes were proposed to the program: two sections of Release Time for grades 7-10 and no Release Time for grades 11-12.
- In May 1994, the Business, Management and Finance Commission felt that a tuition charge for Release Time should not be required, but all involved in the program should be made aware of the cost to run the program (approx. \$105/child). Other churches were approached to give support for the program, rather than charge tuition.
- In June 1996, the Education Commission met with representatives from the Catholic Church and Evangelical Free Church regarding Elementary Release Time for the next school year. Wednesday to be ecumenical and Friday to be Lutheran based.
- The four-period class schedule proposed by the school affected Release Time schedules.
- Grades K-6 attended Release Time twice/week for 1 hour
- By 1997, High School Release Time was not offered

Pastor Jim Arends, Lead Pastor 1992-2002

1997 – 2011

In March 1998, Pastor Arends reported that the area pastors met to discuss how to strengthen the Release Time program. Letters were sent to parents and a request to the school to provide two hours per week for the program.

- In September 1999, Release Time classes for Grades K-6 were Wednesday (Trinity) and Friday (Ecumenical) for 1 hour.
- In September 2002, Release Time for Grades K-6 was once/week for 1 hour.
- In 2006, Mr. Mathsen announces his retirement. It was also a year with budget issues and the council was looking at ways to reduce costs.
- In September 2009, the Education Commission reports finding teachers and mentors has been challenging.

- Changes were made to the Release Time program:
Grades K-3 attended Release Time once/week for 1 hour
Grades 4-6 attended once/month for 2 hours

Pastor Stephanie Frey, Lead Pastor 2004-2016

2011 - 2013

- Grades K-3 attended Release Time once/week for 1 hour
- Grades 4-6 attended once/month for 1 hour

2013 – 2016

In 2015, finding substitute teachers was a challenge; Calvary Evangelical Free Church suspended its release time class for Grades 4-6.

- Grades K-3 attended Release Time every other week for 1 hour
- Grades 4-6 attended once/month for 1 hour

Pastor Jim Scaife, Interim Pastor, 2016-2018

In Feb. 2017, Bekah Leafblad was hired as the congregation's first Director of Children, Youth, and Family Ministry. Release Time was on "hiatus" in the Spring of 2017, but it resumed in the Fall of 2017 with 54 students in Grades K-3 (28 from Trinity; 26 from other area churches) and led by Pastor Liptack and Bekah. The plan was to add a new grade every year to get it back to K-6.

- Grades K-3 attended Release Time once/month for 1 hour
- Classes were not offered for Grades 4-6

Pastor Elizabeth Hermeier, Lead Pastor 2018-present

In 2018-19 Trinity's pool of volunteers has shrunk, especially for those who can give significant time to programs like Release Time. Release Time continued with Bekah and Pastor Liptack leading classes.

- In 2018, Grades K-3 attended Release Time once/month for 1 hour (54 students attending, 28 from Trinity).
- In 2019, Grades K-3 attended Release Time once/month for 1 hour (69 students attending, 32 from Trinity).

In 2020, Release Time was combined with Calvary Evangelical Free Church and 96 students (30 from Trinity) grades K-3 attended. Bekah left the position in Aug. 2021. Kerri Jahnke replaced her.

- In 2020, classes were cancelled after five weeks due to COVID-19.
- In August 2021, Kerri Jahnke was hired as Director of Children, Youth, and Family Ministry.
Primary responsibilities: Developing and leading programs for children, youth, and families as well as building and maintaining relationships with youth and families.
Specific responsibility for Release Time: Organize schedule, plan curriculum, teach or coordinate teachers for monthly K-6 Grade classes.
- In 2021, Grades K-5 attended Release Time once/month for 1 hour for faith conversations, fellowship time, and activities (104 students attending)

In the Winter of 2021, the boiler at the Trinity Center stopped working. Heat was maintained in the building with space heaters so that Beary Patch could finish the year. With the advent 4K classes at Spring Grove Public School, the congregational council made the decision to close the Trinity Center and partner with Giants of the Earth Heritage Center to host Release Time in 2022. After the trial year, it would be determined if it's feasible and practical to invest stewardship dollars in Trinity Center.

- In 2022, Grades K-6 attended Release Time once/month for 1 hour (122 youth) held at Giants of the Earth Heritage Center – Pastor Liptack continues to be an integral partner of the program
- Under Kerri's leadership, the Release Time program grew from K-3 in 2019 to K-6 in 2023.

Additional Thoughts:

From 2017 Annual Report: Interim Pastor's Message

- Trinity's pool of adult volunteers who can give significant time to Release Time program is less.
- The number of youth at any given age has dropped significantly.
- For ministry to be effective for youth and children, programs need to be changed significantly.
- Personal mentoring of youth through the Director of Children, Youth, and Family Ministry is a program that addresses the Christian growth of youth and children in the face of the changing realities of the present day.

Thoughts from Pastor Liptack, April 2023

"In the past five years or so, I have been doing Parables of Jesus, Fruits of the Spirit, Key Bible Passages, Old Testament stories of unexpected heroes and faith, and stories of Jesus. I have found that telling Bible stories in an engaging way really captures the kids' attention. My passions for teaching the Bible to kids engages the kids in questions and matters of faith."

Thoughts from Kerri Jahnke, April 2023

When she was asked how many people it would take to teach release time, she replied, *"at least four people teaching three hours each week, who are committed to teaching each week."*

Taken from 2022 Release Time Permission form

"The Trinity Center has been a faithful servant of the church for 60 years, and we give thanks for all who made that possible."

Sources:

125th Anniversary book: History of the Trinity Congregation (1855-1980)

The Parochial School by Mrs. Knute Lee, pages 65-69

May 1966 Congregational Meeting

Annual Reports

- 2017 – Interim Pastor's Message, page 3
- 2017- 2022 Education Team Reports

Council Minutes (1971-present)

Director of Children, Youth and Family Ministry
Job Description

Christian Release Time Program/Permission for
Religious Release Time Classes form

Thoughts from Bekah Leafblad

Thoughts from Pastor Len Liptack

Data from Spring Grove Schools for the Years 1997-present

Meaningful conversations with Trinity Members

MASTER PLANNING / FACILITIES PLANNING COMMITTEE 2023

In regards to the addition, the Master Planning Committee (MPC) received a list of 29 architects from the SEMN synod office, Nolie Kapplinger, Bev Nelson, and Jacque Wennes reviewed each website and sent an email to 8 firms. Four architectural firms responded.

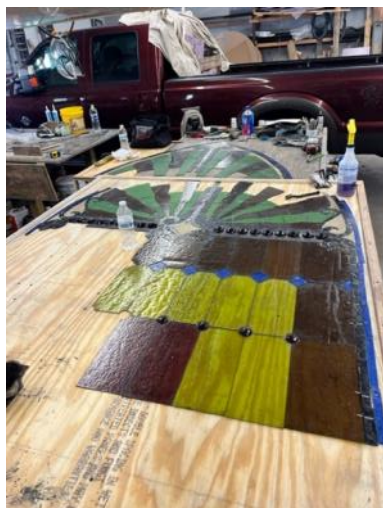
After reviewing the four firms that responded Nolie Kapplinger, Bev Nelson and Jacque Wennes recommended the Kodet Architectural Firm from Minneapolis bring a presentation to the full MPC. The Kodet Architectural Firm first completed focus group discussions with each team and employees for input of needs vs wants of Trinity's congregation. The next meeting with the MPC discussed different options on placement of an addition for Trinity. One option was demolishing the east end education 1949 addition and building on that site. Since there would be costs of demolition and a need for another elevator that option did not advance. The second option was to add a single floor addition extending north from the existing elevator site, measuring 44'8" X 80'. These drawings are attached. As 2023 closes, Kodet's full report and recommendations are available for anyone interested, please contact Jacque Wennes at jacquewen@aol.com or call 563-380-5454.

The Kraus-Anderson Construction Company recommended by Kodet out of Minneapolis did a detailed assessment of the entire Trinity Church structure and internal utility components and provided property with the results of the facility condition assessment. The full report is also available to anyone who would like it.

The MPC committee commends the Property Team for their follow through with the steeple repair.

Trinity has been blessed with the work of Staige Stained Glass Renovation and the work they have completed thus far on Trinity's stained glass windows.

Respectfully submitted
Jacque Wennes





Trinity Lutheran Church
Masterplan

Main Street Perspective
November 3, 2023

A handwritten signature in black ink, consisting of stylized, overlapping loops and lines.

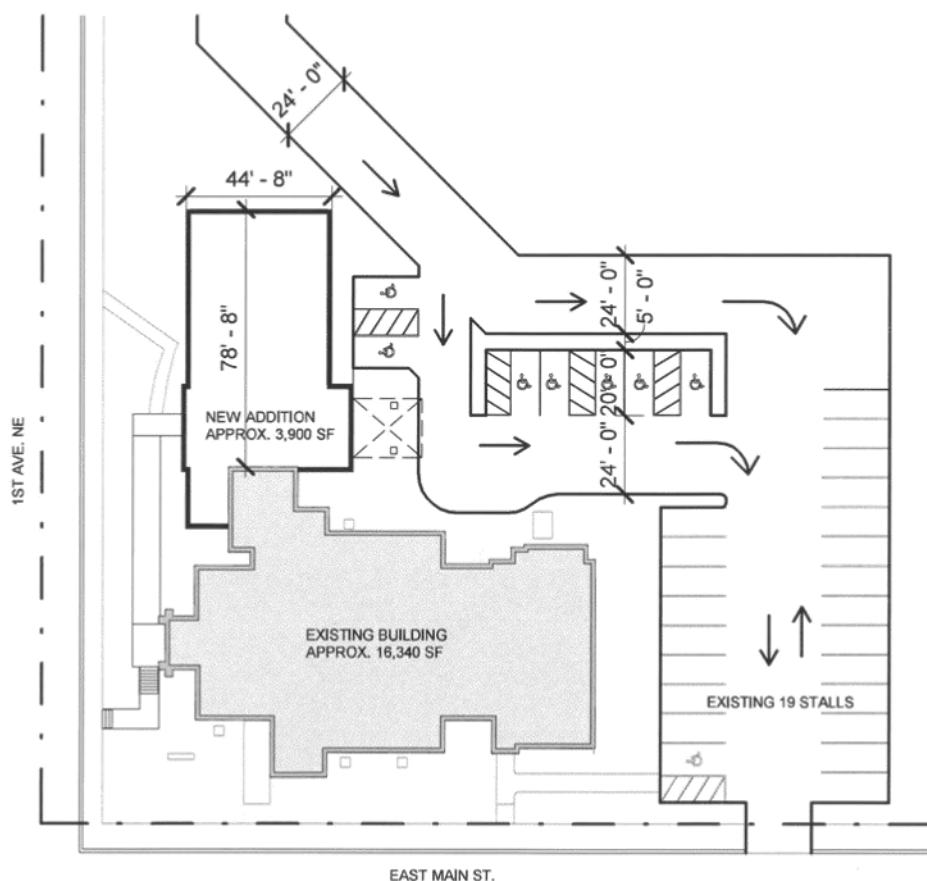
► ARCHITECTURAL REVIEW

PROPOSED UPDATES - CONTINUED

As for the design and character of the addition, it will reflect that of the existing church. Materials will be closely matched and details emulated, like the stone windowsills and beautiful brick detailing along the roof. There is also a proposed installation of stained-glass windows above the east and west entryways.

Moving on to the exterior of the existing building, replacing the original west entrance staircase is proposed. While proximity to the street eliminates the chance for a straight path, by creating a landing outside the doors with a stair to the side that is less steep, a safer entrance is created. Also proposed is a sloped sidewalk to the new addition. This option would not address the stairs inside of the vestibule as that would be a massive undertaking. Options such as an interior lift were explored along with raising the doors, but the character of the existing façade would be compromised. As result, these options are not proposed. However, the recommended design intervention would reduce the total amount of stairs one would have to climb.

Additionally, the parking lot would be modified under the proposed expansion. This plan would extend slightly into the former cemetery. So options can be explored further after a ground penetrating radar scan of the area is complete. Before proceeding with any further site work, a comprehensive survey of the grounds by a licensed surveyor would be necessary. On top of that, a geotechnical report would be required. This report involves a technician drilling bore holes around the location of the addition to determine the type of soil and it's bearing capacity. It can also provide insight regarding water infiltration for stormwater management purposes.



► ARCHITECTURAL REVIEW

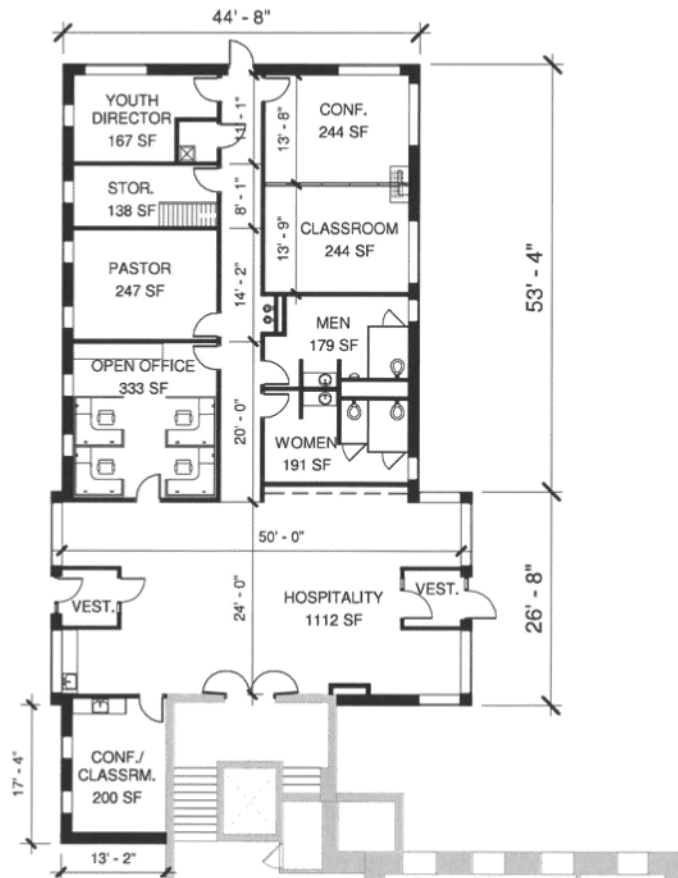
PROPOSED UPDATES - CONTINUED

Addition

The major proposed change to Trinity Lutheran is an expansion off of the current elevator lobby extending to the north. This addition would become the clear, main entrance for the congregation, as well as visitors, to pass through a welcoming hospitality area on their way to the elevator and worship space. This multi-purpose room would provide options for the congregation, from coffee after services on the way to the parking lot, to informal meeting areas, perhaps a small chapel space, or an area for young children to run around during service. Dramatic high ceilings with exposed wood trusses would add warmth and volume. It is also proposed to have AV infrastructure, so that the services could be heard and possibly projected into the area.

Directly off this main room would be the church offices, visible to all who enter. A larger open office area to accommodate four staff. Adjacent the main office would be two private offices for the youth coordinator and pastor. The pastor's office would be large enough to include a desk area as well as a seating area for counseling and support. New restrooms would be located across the hallway. These restroom facilities would be accessible, efficient (low-flow plumbing fixtures) and include baby changing stations.

Next, three classroom/conference areas are proposed to serve the youth programs, Sunday school, committees, and the wider community. Two of these rooms are anticipated to be connected so that they can become a larger space for bigger groups. The remainder of the addition allots space for support functions such as, mechanical systems, miscellaneous storage and a janitor's closet.





HERITAGE ENDOWMENT FUND

Funds for the charitable Heritage Fund remain in Thrivent Charitable Impact and Investing, in the Core Growth Portfolio. Donations were limited to \$150 private donation. Funds appropriated in 2022 will be issued this year for continued window repair. There were no requests for funding at this time. The distribution formula for funds will not allow for any withdrawing of funds this year 2024.

Steve Landsom, Heritage Endowment Fund chair
members: Jeff Engen, Cheryl Fisch, Dana Kjome, Gary Wilhelmson

MISSION ENDOWMENT FUND

The purpose of this fund is to help establish new ministries and seek additional stewardship opportunities that could be a part from the general operation of the congregation.

The fund was started in 1985 with a generous bequest of \$45,000. Since that time, it has grown to \$321,487. During that time we have granted over \$150,000 to college campus ministries, scholarships to people in the seminary, food shelves, local social services, and even our own Trinity Care Team! Please read our financial report to see where our support went in 2023.

The bulk of our investments, or 70%, is invested in Mission In-Faith funds. This is an ELCA-based firm located in Chicago that uses the funds to borrow at below-market interest rates to other “start-up” Lutheran churches that need financing for their building needs. The balance of 30%, is invested in a Thrivent-owned foundation called In-Faith funds. The purpose of the money invested there is to further grow our fund assets for future stewardship opportunities.

We invite all members of the congregation to consider a gift to this mission. It is an important part of our mission as Christians to support other Christians around the world. Our committee thanks you for your prayers and support in Trinity’s Biblical mission.

Bruce Hegge (chair), Mark Dokken (treasurer), Howard Deters, Joan Lewis, Greg Wennes

SCHOLARSHIP ENDOWMENT FUND

The Scholarship Endowment Fund of Trinity Lutheran Church is thankful again this year for the ability to provide scholarships to students of our congregation. We know how important these scholarships are in these times of rapidly rising post-secondary education expenses.

We awarded eight scholarships in the amount of \$500 each to eight graduating seniors. We also awarded eight scholarships to second, third, and fourth year students in the amount of \$1250 each. The total amount presented to students in our congregation was \$14,000.

We are grateful for the donations that the Scholarship Endowment received this year, and we look forward to continuing to support the post-secondary students of our congregation. Memorials and contributions are always welcome and appreciated!

Missy Bratland, Scholarship Endowment Fund Chair
Members: *Marlene Deschler, Shari Wennes, Candyce Deck, Sheri Allen*

WELCA (Women of the ELCA)

WELCA has had a year of service using our hands with guidance by our Creator of these hands. We continue to fulfill our purpose "to commit ourselves to grow in faith, affirm our gifts, support one another in our callings, engage in ministry and action, and promise healing and wholeness in the church, our society and the world."

Our activities of service:

- Provide for grieving families by serving a luncheon after the funeral service for their loved one.
- Gathering on Love Day, the last Friday of each month, to make quilts for LWR and providing a few quilts to local people through the Trinity "Little Free Pantry"
- Some of the gals also assemble baby care kits and school bags for Lutheran World Relief (LWR). During 2023, Trinity ladies sent 74 quilts, 200 baby care kits, 88 personal care kits and 204 school bags. These items were taken to Olson Explosives in Decorah in the spring and fall for transport to LWR warehouse in South St. Paul.
- WELCA's Boutique provides homemade craft items for sale in the Fellowship Hall.
- WELCA, with the help of the entire congregation, coordinated the annual Fall Meatball Dinner serving 618 drive-through dinners. The profits for the meals were distributed and are listed in WELCA's financial report. A \$5,000 donation was made to the steeple fund. This remarkable event involves around 70 of Trinity's members helping in a variety of activities to prepare and serve the dinner.



We continue to offer prayers for the ability to be the hands to do God's will.

Thank you Trinity WELCA members for all you do!

Jacque Wennes, President



CEMETERY ASSOCIATION

The Buds and Blossoms Garden Club planted and cared for the two flower beds again this year. They have stated that they no longer wish to take care of these beds. They have always done a wonderful job and we thank them for all of their hard work!

New posts were installed by Jim Wilhelmson by each of the two water hydrants. Jim also tilled the flower gardens before planting in the spring. Donald Vesterse and Marge Brevig helped remove flowers from the north flower bed after the season ended. Jim trimmed the golden spirea bushes and hauled out the yard waste from the south circle in the fall. Dana Kjome helped cut brush along the fence line of the north edge of the cemetery. Dana also helped put down the wooden winter grave stakes. Jim re-seeded several grave sites from the winter funerals where the original seeding did not germinate due to the dry summer. Jim sprayed and cleaned several Veteran monuments and a few other monuments that were covered with moss, etc. Jim also sells the grave sites, and marks where the burials should be.

Total Lawn Service of Spring Grove was contracted for lawn care again this year. They also trimmed the evergreen trees along the west edge of the cemetery, making it easier to mow under the trees. We thank them for doing a great job! As their contract is now up, Jim has contacted them to negotiate a new contract for either a one year or three year contract, and are awaiting a response from them.

The Cemetery Association voted to raise the price of the cemetery plots to \$675 for members of Trinity, and \$875 for non-members. There were 12 cemetery plots sold in 2023. There were 13 burials, seven were cremation and six were casket burials.

Thank you to Sue Wiste for the bookkeeping again this year, and to all of the other volunteers who have helped keep the cemetery looking tidy and beautiful.

The current board members are: Jim Wilhelmson, Gaylord Anderson, John Halverson, Aaron Solum, Roger Housker and Sue Wiste. Due to the passing of Carlyn Kraabel, we need to elect a new cemetery commissioner.

Respectfully submitted by James Wilhelmson on behalf of the TLC Cemetery Association Board of Directors.

2023 PASTORAL ACTS PERFORMED BY TRINITY'S PASTORS**BAPTISMS**

Leva Marie Curran
 Amelia Kelly Gartner
 Drayke Jordan McCabe
 Ariana Marie Mahr
 Braxton Don Ladsten
 Everley Rosemarie Jergenson
 Stella Rae Jergenson
 Journey Desire Johnson
 Laura Leigh Turek
 Lucy Ah-Rin Walseth
 Ander Kenneth Solum

CONFIRMANDS

April 2023

Ellevia Violet Berns
 Christian David Bjerke
 Ruby Jean Engeldinger
 Siri Kristin Konkel
 Macy Jade Kraus
 Madison Jean Lile
 Tysen Nicholas Moen
 Callie Fern Petersen
 Addison Emma Turner
 Olivia Jean Wedmann

October 2023

Merik Andrew Allen
 Emery Robert Bartell
 Karson William Betcher
 Kya-Violet Morrisyn Deck
 Adelia Lee Gross
 Harper Elizabeth Ann Myrah
 Hayden Marjorie St. Mary
 Jada Reese Strinmoen

WEDDINGS

Kaitlin Bratland and Bobby Augedahl

FUNERALS / GRAVESIDE SERVICES

Lorraine June Hagen
 Janice Marie Storlie
 Carlyn George Kraabel
 Marleen Elaine Morken
 Kathleen Marie Myrah
 Ronald Allen Gjere
 Ronald Wayne Stone
 Thomas Lee Guberud
 Barbara Jean Guberud
 Robert Guberud
 Michael A. Volkenant
 Odell Leo Bratland
 Anita Kay Shepherd
 Marilyn Jeanette Sylling
 Ronald Sylling
 Linda L. Newgaard

WORSHIP SERVICES CONDUCTED

Sundays: 52
 Saturdays: 23
 Special Services: 17
 (Festival Days, Lent,
 Advent, etc.)
 Off-site: 47
 (Tweeten Healthcare, Manor,
 Tweeten Apartments, Assisted Living)
 Weddings: 1
 Funerals/Burials: 15

Statistical Report

	Baptized Members
Baptized membership as of December 31, 2022	837
Members received by baptism	11
Members received by affirmation of faith	18
Members received by transfer	0
Members received from other sources	0
Members removed by death	10
Members removed by transfer	9
Members removed for other reasons and statistical adjustment	0
Baptized membership as of December 31, 2023	847
Confirmed membership as of December 31, 2023	479

This table shows the membership statistics that we must report annually to the ELCA.

MEMORIALS GIVEN TO TRINITY IN 2023**BUILDING FUND***In loving memory of:*

Odell Bratland
Carlyn Kraabel

CEMETERY ASSOCIATION*In loving memory of:*

Odell Bratland
Maurice Doely
Lorrain Hagen
Alden Johnson
Carlyn Kraabel
Kathy Myrah
Darryl Rud
Janice Storlie

EDUCATION*In loving memory of:*

Ronnie Gjere
Carlyn Kraabel
Kathy Myrah
Ronnie Gjere

GENERAL FUND*In loving memory of:*

Fred Arnold
Harold Bjerke
Odell Bratland
Carlton Clauson
Mark Clauson
Valborg Clauson
LaDeane Dahle
Joe Deschler, Sr.
Jerry & Audrey Ellingson
Michael Ellingson
Lorraine Hagen
Gaylord Halverson
Sally Kinneberg
Marleen Morken
Kathy Myrah
Henry & Angeline Pankratz
Rosalie Stadtler
Janice Storlie
Melvin Strand
Gordon Sylling
Leonard & Bernice Sylling
Marilyn Sylling
Warren Sylling
Jaclyn Tweeten Morken
Jenifer Tweeten Morken
Ruth Sherry
Morris Tweeten
Leslie & Gladys Wennes
Lois Wilhelmson

In appreciation of:

Lori, Terry, Dawn, Lorilyn
498-AMEN readers

H.I.P. / BACKPACK FUND*In loving memory of:*

Elaine Bergsgaard Nassen

MISSIONARY FOR A DAY CANDLE*In loving memory of:*

Fred Arnold
Mervin Ellestad
George Flatin
Michael Hillman
Arnold & Irene Rosaaen
Rodney Rosaaen
Audrey Stearns
Marilyn Sylling

In celebration of:

Ander Kenneth Solum's baptism

MEDIA MINISTRY FUND*In loving memory of:*

Sally Kinneberg's Birthday
Ove Fossum, Jr.
Jenifer Tweeten Garness
Michael Hillman
Betty Johnson
Carlyn Kraabel
Jaclyn Tweeten Morken
Kathy Myrah
Ronald Nerstad's Birthday
Arnold & Irene Rosaaen
Rodney Rosaaen
Ron Stone
Marilyn Sylling
Morris Tweeten

In appreciation of:

Pastor Elizabeth Hermeier
Pastor Lane Zaffke

In celebration of:

Paul & Helen Solum's Wedding Anniversary
Marie Hanson's 99th Birthday

In honor of:

Harriet Esse's 94th Birthday
Marie Hanson
Thankful Brass

NE CEMETERY LANDSCAPE FUND*In loving memory of:*

Dennis Deters

SCHOLARSHIP ENDOWMENT*In loving memory of:*

Owen Vaaler

STAINED GLASS WINDOW PROJECT*In loving memory of:*

Lorraine Hagen
Clifton & Ruth Hahn
Jon & Alice Halverson
Emil & Ruth Larson
Kathy Myrah
Lorentz & Sigrid Myrah
James & Margaret Ness
Ron & Jo Oswald
Ronald & Melba Privet
Janice Storlie
Harlan & Louise Tweeten
Vernon & Margaret Wold

STEEPLE PROJECT*In loving memory of:*

Esther Buxengaard
Dale Bunge
Wayne Bunge
Rick Dehning
Slim Dehning
Ove Fossum, Jr.
Ruth Hoekstra
Don & Helen Holm
Carlyn Kraabel
Julian & Vivian Landsom
Milford & Emma Landsom
Richard Lewis
Kathy Myrah
Lorentz & Sigrid Myrah
Ron & Jo Oswald
Charles & Ruth Roverud
Lloyd & Nancy Sanness
Ernest & Charlotte Schmidt
Jodi Ann Wilhelmson
Rags & Lucille Wilhelmson

2023 MISSION WORK OF TRINITY	
Thankful Gifts Catalog	
Alternative Gifts International	\$6,297.00
ELCA Good Gifts	\$3,655.00
Lutheran Partners in Ministry	\$1,574.00
TOTAL Thankful Gifts	\$11,526.00
Southeast MN Synod	\$12,479.00
ELCA World Hunger	\$2,391.36
Houston County Food Shelf	\$100.00
Lions Den Clothing Corner @ SG Public School	\$184.71
Replenish Little Free Pantry	\$2,906.18
Mission Endowment to Little Free Pantry	\$3,000.00
Christmas Cheer Baskets	\$3,717.69
Media Ministry Worship Services	\$6,350.00
Backpack / HIP Funding	\$3,159.16
Good Samaritan Donations	\$8,713.62
ERC First Fruits - Lutheran Disaster Response	\$6,000.00
Missionary for a Day candle—Nola Nackerud	\$1,260.00
Empty Bowls meal - Sunrise Care Facility South	\$607.50
Synod Assembly donation	\$500.00
Noisy Offering—Nola Nackerud	\$321.21
Bag-A-Buck offering—Little Free Pantry	\$357.25
Fire Relief—SG Fire Department	\$13,000.00
PreK tuition scholarships	\$975.00
ELCA International Disaster	\$400.00
Total Mission Work of Trinity	\$77,948.68
Stained glass windows project funds from individuals	\$39,756.00
Stained glass windows project funds from Heritage Endow.	\$36,000.00
Steeple project funds raised from individuals	\$30,000.00
	\$105,756.00
<i>See also Mission Endowment distributions</i>	

Southeastern Minnesota Synod ELCA 2023 Ministry Report



As another year has drawn to a close, we give thanks for what has been and look forward with anticipation and hope.

In 2023, the ministry of the Southeastern Minnesota Synod continued in earnest. Sixty-two congregations engaged in the call process even as some continue their call process into the new year. We were delighted to welcome 21 new rostered ministers into various settings within the synod.

For the first time in several years, we hosted a visit from a global companion synod. Bishop Atahualpa Hernandez of the Evangelical Lutheran Church of Colombia (IELCO) spent a week visiting our synod's leaders, members, and ministries. It was a joy to spend time with him and learn from IELCO's excellent diaconal ministry among the most vulnerable in Colombia.

Our 2023 Synod Assembly, held in May, welcomed Dr. Susan Brower as the keynote speaker. Dr. Brower helped us understand demographic trends across the state and our communities. In May of 2024, we will use this information as a springboard for the focus of our next Synod Assembly. We will welcome Dr. Matt Bloom to share as we consider how each of us can impact our congregations and communities.

As I consider the ministry of the synod in 2024, I am drawn to the phrase *every congregation connected*. In 2023, congregations took advantage of the connections we have with each other; this was especially evident in the continued increase of collaborations between individual congregations. Throughout the synod, congregations have strengthened ministry through partnering with neighboring congregations.

As we draw on the strength of our internal connections, we have an opportunity to engage afresh with the communities our congregations are already a part of. What opportunities are there to be the church for the community beyond our buildings? What is already happening that we can come alongside? What needs of our neighbors currently need to be met?

One of the gifts of being a congregation of the Southeastern Minnesota Synod is that no congregation must go it alone. We are part of a network with congregations and connections that strengthen us and multiply the impact we have in the communities to which we are called.

May the Spirit open our hearts and minds to all the ways God continues to invite us to participate in God's good work in the world!

In Christ,

Rev. Regina Hassanally
Bishop Regina Hassanally



Good Earth Village gratefully acknowledges the many faithful investments from our congregational members and partners. From your financial contributions, to volunteer hours, to providing program leadership, to hosting our staff, to your prayers and other service,
you all make the Village.

Congregational financial support was offered in monthly, annual, and special gifts/grants.

- **58** congregations made a financial, missional investment in this outdoor ministry through unrestricted donations, event sponsorships, and grants totaling \$102,047.73.
- **43** WELCA partners made combined contributions of \$ \$11,450.89.
- **19** congregations held retreats at Good Earth Village

Around 70% of annual financial needs are met by donations from individuals, congregations, WELCA groups, conferences, and businesses. The work of Good Earth Village would not be possible without the partnerships with our member congregations and the non-member ministry partners.

Your support is vital to fulfill the promise of keeping outdoor ministry affordable for every family and individual. Thank you!

Summer Camp 2023

1. Fifteen young adult leaders, including three international staff from Colombia.
 2. We served 654 campers onsite representing 134 congregations.
 3. We provided 8 off-site day camps at congregations.
 4. We delivered a new confirmation camp curriculum written for and taught to campers from multiple congregations, rather than the traditional confirmation camp taught by campers' pastors. The intention was to allow pastors a reprieve from summer teaching, and to allow campers from smaller congregations or congregations where their pastor was on sabbatical to attend confirmation camp.
 5. Offered Staff-in-training program to high school students at no cost to them.
 6. Provided financial assistance to 90% of campers.
-

Good Earth Village is committed to being an effective ministry partner and welcomes your ideas. Please look for new and continued ways to lift up outdoor ministry to make faith formation stronger together. When we partner, our youth and families benefit by growing stronger in their faith and relationships.

Good Earth Village Staff are available to worship with you and/or present portions of your worship service. Please contact us at 507-346-2494 to arrange any of the following,

- Congregational or Special Music
- Pulpit Supply/Preaching
- Scripture Readings
- Youth Engagement/Children's Message
- A full GEV Service
- Outdoor Church Service at GEV



LUTHERAN
WORLD RELIEF

2023 ANNUAL REPORT FOR CONGREGATIONS

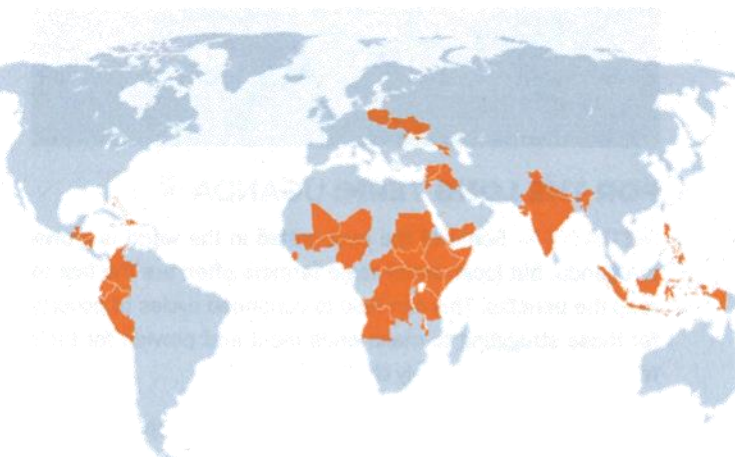
LEFT: Maria Tinda is a teacher in the Southern Highlands of Tanzania. Because of your love — and LWR School Kits — both attendance and relationships have improved at her school.

All around the world, families are suffering. Violence. Natural disasters. Hunger and poverty. Amid it all, you have been a refuge, protecting and supporting our neighbors in this terrible, perfect storm.

Your compassion has made a life-changing impact. You alleviate suffering for families in crisis. You empower sustainable change for a better tomorrow. You surround and comfort those in distress with the warmth and love of your quilts and kits.

Your love goes where no one else goes. This is how you are changing lives.

Your love reached neighbors in 40 countries in 2023.



IN TIMES OF CRISIS: UKRAINE 📍

SITUATION: In areas of Ukraine under Russian occupation, many health care systems have been decimated. Even once liberated, these communities are left with destroyed or damaged hospitals and little access to care since many doctors fled or were killed.

IMPACT: Your love is providing vital health care in Ukraine in places where there is none. Iryna Martynenko, 57, visited the LWR mobile medical unit in Balakliia, following the 2022 Russian occupation. As a caregiver, Iryna stayed behind to care for her disabled mother while many of her neighbors fled. Most doctors have either left or have been killed, so Iryna is grateful for the opportunity to be seen. She's even more grateful that because of you, the care is free. Her minimum wage job at the local library wouldn't have covered her medical expenses.

"I am happy, yes. I am very pleased that I have such an opportunity to see doctors," she says. "And just the right doctors ... I am very, very grateful. I just don't know how to thank you."

For Oleksii Bordunov, the clinic's general manager, it's all in a day's work. "Our job is to come to the town and start providing medical services to people who need them," he says. **"We will support these people and visit them under any circumstances."**



Iryna Martynenko after receiving care at the LWR mobile medical unit in Balakliia, Ukraine.



View video report at [LWR.ORG/2023REPORT](https://www.lwr.org/2023report)



Wandeba Scovia sorting and hand-raking coffee at a drying shade in Bufuma, Uganda.

FOR THE LONG TERM: UGANDA

SITUATION: Some of the best coffee in the world is grown in Uganda, but local, small-scale farmers often are the last to reap the benefits. This can lead to continued cycles of poverty for those struggling to make ends meet and provide for their families despite incredibly challenging work.

IMPACT: Your congregation not only provides support in times of crisis. You are also creating lasting and sustainable change. In Uganda, that support is empowering local coffee farmers, particularly women.

In Uganda, like many other countries in Africa, farming — particularly coffee farming — is mostly done by women. In the past, training and opportunity have focused on the landowners, who tend to be men. By focusing on women farmers, there has been an increase in the quality of the coffee and as a result, farmers bring in more income. Household dynamics are improving as well.

There is a reason behind wanting women to be involved just beyond quality, however. “When a woman gets more money in my country,” says Uganda staff member Kenneth Barigye, “they invest in better food, they invest in better products, they invest in education.”

QUILTS & KITS: TANZANIA

SITUATION: In Tanzania, school supplies are a luxury. When students do not have supplies, not only are they ill equipped to learn when they are present, but there is also a greater tendency for them to be absent, which stunts and prevents their learning even more. Absenteeism can often cause tension between students and teachers as well.

IMPACT: Your congregation’s love is passionately crafted into the thousands of quilts and kits delivered to those in need. From across the miles, your love surrounds our neighbors, including the young students in teacher Maria Tinda’s primary school, located in the southern highlands of Tanzania.

This compassion is making a difference. Recently, each of the 161 students in Maria’s school received an LWR School Kit, assembled with love by Lutheran congregations like yours from across the country. On the surface, the kit is simple — pens, pencils, paper, scissors, crayons, a ruler and an eraser — all in an easy-to-carry bag. But for the students, having such supplies has profound effects. Being equipped translates to better engagement and learning when they are in the classroom, and greater classroom attendance overall.

“Now the situation that the children have, **they are happy when they are at school,**” says Maria. “**It also blesses us and makes us do our job well. I am grateful.** Students and their parents, they appreciate it and are very grateful.”



A student in Tanzania who received an LWR School Kit.

None of this is possible without you.

We at Lutheran World Relief — and your neighbors in need around the world — are **forever grateful.**



View video report at [LWR.ORG/2023REPORT](https://www.lwr.org/2023report)

Crossroads Lutheran Campus Ministry
331 Dillon Avenue
Mankato, Minnesota 56001-4005
507-625-6779



ANNUAL REPORT 2023

Crossroads is a non-profit ministry of the Evangelical Lutheran Church in America. The ministry, in some form, has served the campus for 100 years.

What We Believe

- That God is the source and goal of life.
- That God, the wholly Other, has been made known in Jesus Christ.
- That the Scriptures, read with discernment, reveal God in our midst today.
- That the Holy Spirit makes Christ present and invites us to grow into the mystery of God.
- To love God and neighbor is the basic calling of each person.
- That our lives now, and after death, are held securely in the gracious hands of God.

Staff



In October of 2023, we called a new pastor to join us at Crossroads! Pastor Jenna (PJ) Couch accepted the call as Campus Pastor and is excited to be a part of our ministry. Pastor Jenna and her husband Mike look forward to moving to the Mankato area! They have two children, Kayleigh, age 5 and Spencer, who will be 3 in February. If you need to get a hold of PJ you can call her at 507-200-8096 or email her at pastorjenna@gmail.com.



We are thankful for our office manager, Teri Herder-Blahnik, and appreciate all she does to keep Crossroads thriving. Her attention to detail and organization are great assets to our ministry! If you have other questions about day-to-day operations, building rental, or donations, please email Teri at crossroadsadvocate@gmail.com or call the Crossroads office, 507-625-6779.



We are also grateful to our custodian Kent Paulson, who will be ending his employment with us at the end of January 2024 after 6 years of faithful service. We will miss his kindness, cheerful greetings, and the excellent work he did for us! And we are in the search for a new custodian. If you know someone who may be interested in this position, please let us know!

Board of Directors

<u>Name</u>	<u>Role</u>	<u>Name</u>	<u>Role</u>
Pastor Janet Adams	President	Pastor Jacie Richmond	at Large
Jane Hanson	Secretary/Treasurer	Ray Wicks	at Large
Pastor Roger Haug	Past President	*Ben Geer	at Large
Becky Menk	Campus Cupboard Coordinator		

(* indicates those who were on the board at some point during 2023 but are not currently board members)
We are in need of a few additional board members. If you are interested, please contact Pastor Jenna.

PROGRAM REPORTS

Lunch For-a-Buck

Five local ELCA congregations, Bethlehem, Christ the King, Epiphany (Eagle Lake), Grace, and Messiah (North Mankato) – along with their 40 volunteers – prepared, provided, and served lunch to Minnesota State University-Mankato students and faculty on 31 Tuesdays during Spring and Fall Terms in 2023. Crossroads Campus Ministry's Lunch For-a-Buck program saw increased numbers in 2023. A total of **1,430** individuals were served lunch while the volunteers also collected **\$1,365.77** in donations that were used to purchase salad supplies, beverages, and paperware. The numbers above represent a 57.5% increase in attendance and 44.5% increase in donations compared to 2022, when 909 individuals were served lunch, and \$945.12 in donations were collected.

Hunger and food insecurity are real on the campus of Minnesota State University-Mankato. We are grateful for our partnerships with area congregations who support the students and the ministry at Crossroads. We would not be able to feed the Lord's sheep without them.

Respectfully submitted,
Teri Herder-Blahnik, Crossroads Office Manager

Food Support – Campus Cupboard

Campus Cupboard food pantry provides food to any student with a current ID from MSU-Mankato, South Central College, or Bethany College. It is open Tuesdays, 11:00 AM to 3:00 PM and Thursdays, 12:00 PM to 5:30 PM. In an average month, the Cupboard serves 374 households and distributes 13,451 pounds of food.

- In the summer of 2023, we moved Campus Cupboard to the main level of the Crossroads building. Campus Cupboard is now housed in half of Crossroads' gathering area, which is an excellent use of space, allows us to serve more students at the same time, and offer a wider variety of products. We averaged 974 visits per month and gave away a total of 161,413 pounds of food. This is an increase from last year! We served students, their children and in some cases their parents.
- In addition to our regular visits, we co-hosted a Farmers Market each fall and spring semester with MNSU, where we distributed more than 4,000 pounds of produce to over 500 students in 3 hours.
- Much of the food was purchased from the Second Harvest Heartland food bank. We also participated in food rescue with Cub Foods West, who provided about 33% of the food we distributed without charge.
- We cannot express how great our appreciation is for the on-going support of civic groups. We were blessed to receive two nights of food donations from the Kiwanis Holiday Lights, totaling more than 1,300 pounds. And our heartfelt thanks to the SE MN synod, for your faithful support as well.
- We depend on grants and donations to do the work that we do. We appreciate your support!
- We want to thank all of the volunteers that work so hard to make this mission possible:

Becky Menk, Coordinator
Kathy Sallstrom
Kris Norland
Wendy Paulson

Pat Lueck
Barbara Glass
Sharon Chatleain

Worship with Holy Communion

Worship is held Sunday evenings at 5:30pm at Crossroads. We are using the Dinner Church format, where worship and a meal are combined into a one-hour service. ALL ARE WELCOME to attend. If you are interested in providing a meal for Dinner Church, please contact Pastor Jenna at 507-200-8096 or pastorjenna@gmail.com.

Facility Rental:

The facility was rented on five occasions during 2023, with a \$75 janitorial fee for use of the space. The five events included a spaghetti dinner, high school theater workshop, high school graduation reception, and two pancake breakfast fundraisers.

Trinity Lutheran Church -- General Fund

Balance Sheet

As of December 31, 2023

GENERAL FUND: BALANCE SHEET

	Dec 31, 23
ASSETS	
Current Assets	
Checking/Savings	
1000 · Merchants General Fund	
1002 · General Fund - Helping Hands	801.81
1000 · Merchants General Fund - Other	15,411.92
Total 1000 · Merchants General Fund	16,213.73
Total Checking/Savings	16,213.73
Total Current Assets	16,213.73
TOTAL ASSETS	16,213.73 ✓
LIABILITIES & EQUITY	
Liabilities	
Current Liabilities	
Other Current Liabilities	
2550 · Line of Credit at Bank	-66.91
2575 · Payroll Liabilities	
2578 · Portico benefits	-1,778.39
2575 · Payroll Liabilities - Other	2,946.90
Total 2575 · Payroll Liabilities	1,168.51
Total Other Current Liabilities	1,101.60
Total Current Liabilities	1,101.60
Long Term Liabilities	
2551 · Line of Credit from Ourselves	25,000.00
Total Long Term Liabilities	25,000.00
Total Liabilities	26,101.60
Equity	
32000 · Retained Earnings	19,878.86
Net Income	-29,766.73
Total Equity	-9,887.87
TOTAL LIABILITIES & EQUITY	16,213.73

Audited: Shari Allen 1/21/24
 Allstate 1/21/24

Trinity Lutheran Church -- General Fund
Profit & Loss
 January through December 2023

	Jan - Dec 23
Income	
4600 · ALL OFFERING	
4605 · OFFERING	
4606 · Envelopes	168,603.50
4607 · Online Offering - Electr transf	88,243.74
Total 4605 · OFFERING	256,847.24
4610 · LOOSE OFFERING	4,544.65
4615 · SPECIAL FESTIVAL	
4616 · Ash Wednesday	98.00
4617 · Lenten Services	1,238.28
4621 · Maundy Thursday	235.00
4622 · Good Friday	180.00
4625 · Easter Remembrances-Gen Fund	1,410.00
4626 · Easter	6,849.24
4627 · Pentecost	70.00
4628 · Thanksgiving	0.00
4630 · Christmas	4,737.24
4631 · Christmas Remembrances	10,445.00
Total 4615 · SPECIAL FESTIVAL	25,262.76
4636 · Thrivent Matching Choice \$	3,994.00
4637 · Donation/Memorials	1,665.00
Total 4600 · ALL OFFERING	292,313.65
4601 · PANDEMIC - SBA/ERC	59,173.73
4640 · MISCELLANEOUS	
4642 · Capital Credits - Telephone	1,575.98
4643 · Garage Lease	1,500.00
4648 · Sunday School memorials/gifts	70.00
4649 · Misc Undesignated Donations	1,758.32
Total 4640 · MISCELLANEOUS	4,904.30
4650 · PARTICIPATION & USER FEES	
4660 · Youth Fees Received	
4662 · Confirmation Robes	50.00
4663 · Day Camp Registration	390.00
Total 4660 · Youth Fees Received	440.00

Trinity Lutheran Church -- General Fund

Profit & Loss

January through December 2023

	Jan - Dec 23
4675 · User Fees	
4677 · Use of Church	200.00
Total 4675 · User Fees	200.00
Total 4650 · PARTICIPATION & USER FEES	640.00
4900 · Designated pass-thru donations	
4905 · Christmas Cheer offering	0.00
4907 · Alternative Giving Fair	10,780.00
4913 · ELCA World Hunger Envelopes	2,391.36
4920 · Noisy Offering	0.00
Total 4900 · Designated pass-thru donations	13,171.36
Total Income	370,203.04
Expense	
5000 · Synod Assembly	
5909 · Synod Assembly Fees & Hotel	750.00
5912 · Synod Assembly Donation	500.00
Total 5000 · Synod Assembly	1,250.00
5500 · Property Expenses	
5505 · Church on Main Street	
5506 · Elevator expenses	4,426.08
5509 · Improvements & Repairs	2,938.10
5511 · Janitorial Supplies/Maintenance	677.52
5512 · Snow removal	400.00
5514 · Culligan supplies & Rental	319.98
5515 · Pest Control	1,087.86
5520 · Insurance	14,276.00
5525 · Utilities	18,043.37
5526 · Lawn Mower & equipment repairs	30.13
5527 · Garbage Service - church	2,781.72
5530 · Cemetery Maintenance	1,000.00
5549 · Snow removal-all locations	6,000.00
Total 5505 · Church on Main Street	51,980.76

Trinity Lutheran Church -- General Fund

Profit & Loss

January through December 2023

	Jan - Dec 23
5545 · Trinity Center	
5546 · TC Repairs & Improvements	381.76
5547 · TC Utilities	2,968.62
5550 · Lawn mowing	29.38
Total 5545 · Trinity Center	3,379.76
5565 · Parsonage #1	
5566 · Parsonage Repairs	651.38
5567 · Appliances	29.90
5568 · Parsonage 1 Utilities	4,677.52
Total 5565 · Parsonage #1	5,358.80
5595 · Custodian Wages	13,662.97
Total 5500 · Property Expenses	74,382.29
5600 · EDUCATION	
5610 · Youth Programming	
5611 · Confirmation	600.74
5612 · Day Camp	2,212.49
5614 · First Communion	51.81
5616 · Rally Sunday	48.95
5617 · Seniors Recognition	90.46
5619 · Baptismal supplies	628.61
5621 · SS/release time supplies/rent	545.39
Total 5610 · Youth Programming	4,178.45
5625 · Sunday School	
5627 · Background Checks	216.90
Total 5625 · Sunday School	216.90
5630 · Youth & Family Coordinator	
5631 · Mileage Reimburse/Youth & Fam	876.85
5632 · Youth & Family Coord wages	28,865.37
5633 · Youth cell phone allowance	288.61

Trinity Lutheran Church -- General Fund
Profit & Loss
 January through December 2023

	Jan - Dec 23
5635 · Kerri-Portico Benefits	4,688.11
5630 · Youth & Family Coordinator - Other	0.00
Total 5630 · Youth & Family Coordinator	34,718.94
Total 5600 · EDUCATION	39,114.29
5700 · WORSHIP & SERVICE	
5510 · Organ & Piano Maintenance	525.00
5701 · Sermon Supplies	113.60
5705 · Choir/handbell Expenses	
5706 · Choir Director Wages	8,673.00
5707 · Choir/handbell Music & Supplies	248.19
Total 5705 · Choir/handbell Expenses	8,921.19
5710 · Evangelism Commission	
5711 · New Member gifts	31.13
Total 5710 · Evangelism Commission	31.13
5716 · Stewardship Commission	217.72
5750 · Worship Expenses	
Online Media Needs/Equip/licens	-280.00
5751 · Communion Supplies	499.33
5753 · Bulletin supply/Giving Envelope	1,556.63
5755 · Advertising	308.51
5757 · Organist/Piano/Handbell Wages	7,241.70
5758 · Misc Supplies - altar	528.05
5759 · Meditation Materials	512.81
Total 5750 · Worship Expenses	10,367.03
Total 5700 · WORSHIP & SERVICE	20,175.67
5900 · MISSION OF CHURCH	
5905 · Root River Conference Dues	250.00
5906 · SE MN Synod - ELCA (%- 2021)	12,479.00
5907 · ELCA World Hunger	2,391.36
5908 · Houston County Food Shelf	100.00
Total 5900 · MISSION OF CHURCH	15,220.36

Trinity Lutheran Church -- General Fund

Profit & Loss

January through December 2023

	Jan - Dec 23
5925 · Designate pass-thru donations	
5935 · Alternative Giving Fair	
5936 · Alternative Gifts International	5,451.00
5937 · ELCA Good Gifts	3,655.00
5938 · Luthern Partnrs in Gl. Ministry	1,574.00
Total 5935 · Alternative Giving Fair	10,680.00
Total 5925 · Designate pass-thru donations	10,680.00
7300 · Administrative Expenses	
7302 · Admin Assist Comm Wages	16,741.27
7303 · Admininstrative Assistant Wages	19,050.43
7304 · Accounting Expenses & Wages	8,663.42
7305 · Online transaction Fees	1,163.57
7306 · Accounting Fees	4,410.00
7307 · Banking fees	250.25
7308 · Membership Fees & Dues	90.00
7309 · Interest on Loans	456.05
7310 · Cell Phone Reimb - Marlene	143.16
7315 · Computer & Software	3,763.38
7316 · Copier & Printer costs	6,952.76
7317 · Office Supplies	2,148.15
7318 · Postage	575.77
7319 · Web Site Expenses	225.00
7325 · Seminars & Conv (non pastoral)	45.00
Total 7300 · Administrative Expenses	64,678.21
7322 · Staffing - Advertising	437.69
7500 · Other personnel expenses	
7503 · Payroll Taxes	8,279.54
7504 · Workmans Comp Insurance	1,708.00
7500 · Other personnel expenses - Other	157.00
Total 7500 · Other personnel expenses	10,144.54

Trinity Lutheran Church -- General Fund

Profit & Loss

January through December 2023

	Jan - Dec 23
7600 · PASTORAL MINISTRY	
7630 · Pastor Lane Zaffke (1/4 time)	
7631 · Base Salary - LCZ	17,656.00
7632 · Mileage reimbursement- LCZ	500.00
7633 · Housing Allowance - LCZ	4,453.00
7634 · Health / Retirement - LCZ	6,951.00
7635 · Social Security offset - LCZ	1,679.93
7638 · Cell phone allowance- LCZ	240.00
7640 · Funeral & Wedding stipends	
7641 · Funerals	600.00
7642 · Weddings	0.00
7643 · Burials	50.00
Total 7640 · Funeral & Wedding stipends	650.00
Total 7630 · Pastor Lane Zaffke (1/4 time)	32,129.93
7650 · Pastor Elizabeth	
7619 · Continuing Ed- EAH	1,027.07
7651 · Base Wages-EAH	31,913.00
7652 · health/disability/Retire-EAH	15,054.43
7653 · Housing Allowance-EAH	14,062.00
7654 · Retiree Support-EAH	6,812.96
7655 · Social Security Offset - EAH	3,714.00
7656 · Cell phone Allowance - EAH	480.00
7657 · Mileage Reimb. - EAH	1,300.00
7658 · HSA Savings account-EAH	900.20
7659 · basic Group Life _EAH	531.02
7660 · Housing Equity - Portico	1,756.80
Total 7650 · Pastor Elizabeth	77,551.48
Total 7600 · PASTORAL MINISTRY	109,681.41
7670 · Communications - Newsletter Exp	949.64
7680 · Misc/council Expenses	133.32
7681 · Transfer to Spec. Acct-ERC	53,122.35
9999 · misc- in & out account	0.00
Total Expense	399,969.77
Net Income	-29,766.73

12:54 PM

01/20/24

Accrual Basis

TRINITY LUTHERAN SPECIAL ACCOUNTS

Balance Sheet

As of December 31, 2023

	Dec 31, 23
ASSETS	
Current Assets	
Checking/Savings	
Thrivent Investment	
Building Project \$ (Thrivent)	539,478.48
Total Thrivent Investment	539,478.48 <i>Aw</i>
New Albin Savings Bank	
NASB-CD-Windows	63,000.00 <i>Aw</i>
NASB-Steeple Account	85,679.89 <i>Aw</i>
New Albin-CD-Dedicated Pastor S	24,078.44 <i>Aw</i>
New Albin-MM- All Endowments	2,932.10 <i>Aw</i>
New Albin - CD- All Endow-KG	12,390.37 <i>Aw</i>
New Albin Saings-Olerud Trin Ct	12,527.99 <i>Aw</i>
Total New Albin Savings Bank	200,608.79 <i>Aw</i>
MERCHANTS BANK	
Bank Fees / Interest	765.33
Emergency	16,000.00
Lions Den Clothing Corner	1,036.20
Building Fund (Merchants)	275.00
Worship Committee Funds	
Worship, Publications	679.99
Altar Guild - Communion Linens	713.33
Church Banner Fund	256.88
Historical Display Case Fund	212.06
Worship Committee Funds - Other	980.12
Total Worship Committee Funds	2,842.38
Music Funds	
Handbell Music	552.11
Praise Band	146.00
Choir Music Fund	3,813.93
Organ & Piano Upkeep	40.00
Music Funds - Other	130.00
Total Music Funds	4,682.04
Debt Retirement Fund	520.00
Translation of Church Records	1,368.00
Trinity Church Improvement Fund	
Handicap Access TLC Fund	915.00
Parson2Sale- Church Improvement	4,413.87
Boiler / Air Replacement 2018	7,297.33
Church Building Impr-Windows	
Olerud Beq-Church Improvements	100.00
Church Building Impr-Windows - Other	1,286.06
Total Church Building Impr-Windows	1,386.06
Church Steeple Repair	9,880.00
Church Landscaping/Sign	1,000.00
Trinity Church Improvement Fund - Other	783.95
Total Trinity Church Improvement Fund	25,676.21
Outreach Ministry	
Celebration Funds	1,212.82
Good Samaritan Fund	4,863.47
Total Outreach Ministry	6,076.29
Missions of Church	
Radio / Media Broadcast Fund	5,745.99
Total Missions of Church	5,745.99

12:54 PM
01/20/24
Accrual Basis

TRINITY LUTHERAN SPECIAL ACCOUNTS
Balance Sheet
As of December 31, 2023

SPECIAL ACCOUNTS: BALANCE SHEET

	Dec 31, 23
Care Ministry	
Little Pantry	6,263.43
Faith Chests	900.00
Care Team other	999.63
Back Pack Fund - H.I.P.	1,544.96
Total Care Ministry	9,708.02
Education Funds	
Youth	2,863.51
Confirmation Meals	449.01
Confirmation Camp/ Camperships	1,149.67
Release Time Education Fund	1,785.84
Sunday School, Programming	2,125.93
Education Funds - Other	-51.40
Total Education Funds	8,322.56
N.E. Cemetery Landscape Fund	4,241.00
Prepare/Enrich (pre) Marriage	200.00
Dedicated Pastor Support	10,000.00
Property Improvement/Upkeep	
Trinity Church Tuckpointing	6,812.57
Trinity Center Improvement Fund	229.33
Property Usedonations/memorials	75.00
Property Improvement/Upkeep - Other	75.00
Total Property Improvement/Upkeep	7,191.90
Total MERCHANTS BANK	104,650.92
Total Checking/Savings	844,738.19
Total Current Assets	844,738.19
TOTAL ASSETS	844,738.19
LIABILITIES & EQUITY	
Liabilities	
Long Term Liabilities	
Loan to GF from SA(Loan selves)	-25,000.00
Total Long Term Liabilities	-25,000.00
Total Liabilities	-25,000.00
Equity	
Opening Bal Equity	230,600.13
Unrestricted Net Assets	531,269.35
Net Income	107,868.71
Total Equity	869,738.19
TOTAL LIABILITIES & EQUITY	844,738.19

Audited by: Shari Allen 1/21/24

AW 1/21/24

12:54 PM

01/20/24

Accrual Basis

TRINITY LUTHERAN SPECIAL ACCOUNTS
Profit & Loss
January through December 2023

	Jan - Dec 23
Income	
Thrivent Bldg Invest gain	84,485.18
Designated donation	343,936.60
Interest Income	4,076.46
Total Income	432,498.24
Expense	
Thrivent Bldg invest loss	43,067.31
Transfer to Luther League	100.00
Transfer From NASB	10,000.00
Transfer to NASB	117,170.00
Lions Den Clothing Expenses	184.71
Food Pantry Replensih	5,235.91
Christmas Cheer	3,717.69
Donations	1,867.50
Radio Broadcast - Worship	6,350.00
Interfund transfer	50.00
Bank Fees	13.12
H.I.P Expenses	3,159.16
Transfer to General Fund	864.50
Education Expense	
Confirmation	3,552.62
Total Education Expense	3,552.62
Good Samaritan Expense	28,686.62
Improvement Expense	
Trinity Church Improvements/Rep	84,905.35
T Center Improvement Expense	2,959.04
Total Improvement Expense	87,864.39
Dedicated Pastoral Support	
Celebration Expense	146.00
Dedicated Pastoral Support - Other	10,000.00
Total Dedicated Pastoral Support	10,146.00
Olerud Bequest - Church	2,600.00
Total Expense	324,629.53
Net Income	107,868.71

12:42 PM
01/20/24
Accrual Basis

Trinity Luther League
Balance Sheet
As of December 31, 2023

YOUTH ACCOUNT: BALANCE SHEET

	Dec 31, 23
ASSETS	
Current Assets	
Checking/Savings	
1000 · Merchants checking	25,603.99
Total Checking/Savings	25,603.99
Total Current Assets	25,603.99
TOTAL ASSETS	25,603.99
LIABILITIES & EQUITY	
Equity	
3000 · Opening Balance Equity	8,711.45
32000 · Unrestricted Net Assets	14,363.82
Net Income	2,528.72
Total Equity	25,603.99
TOTAL LIABILITIES & EQUITY	25,603.99

Audited by: *Shirley Allen* 1/21/24

Awiste 1/21/24

12:42 PM
01/20/24
Accrual Basis

Trinity Luther League
Profit & Loss
January through December 2023

	Jan - Dec 23
Income	
4000 · Youth Group Income	
4010 · Memorial Gifts	20.00
4015 · Maple Syrup Sales	2,610.00
4020 · Easter Brunch revenue	451.27
4025 · Lenten Supper revenue	1,082.10
4030 · Holiday Pie Sales	595.00
4035 · Meatball Dinner proceeds	8,018.00
4040 · Scrip Gift Card Sales	1.85
4300 · Payments by Parents	100.00
4800 · Fees paid- other churches	
4805 · Parent/youth payments	7,100.00
4810 · Congret/WELCA other church	1,000.00
Total 4800 · Fees paid- other churches	8,100.00
Total 4000 · Youth Group Income	20,978.22
Total Income	20,978.22
Expense	
5000 · Youth (non-confirmation) expens	
5010 · Fundraising expenses	
5011 · Syrup sales costs	1,345.00
5012 · Lenten supper costs	69.07
5013 · Pie sale costs	321.98
5014 · Easter Brunch expenses	186.57
5015 · Meatball dinner costs	3,657.96
Total 5010 · Fundraising expenses	5,580.58
5100 · Youth Trips	
5105 · Trip admissions & fees	5,551.25
5106 · Registratrin - Youh Trips	1,239.98
5112 · Trip hotel costs	3,873.14
5113 · Trip meal costs	306.95
Total 5100 · Youth Trips	10,971.32
5200 · Youth Events & Activities	
5205 · Events admissions & fees	100.00
5208 · Event food costs	1,771.55
Total 5200 · Youth Events & Activities	1,871.55
5300 · Administrative costs	
5310 · Bank fees	26.05
Total 5300 · Administrative costs	26.05
Total 5000 · Youth (non-confirmation) expens	18,449.50
Total Expense	18,449.50
Net Income	2,528.72

TRINITY HERITAGE ENDOWMENT FUND**THRIVENT**

Beginning balance 1/1/23	\$625,677.26
Administrative Fee	(6,044.71)
Trinity Church Windows	(35,480.85)
Interest/Dividends	13,633.13
Unrealized capital gain (loss)	70,241.42
Balance as of 12/31/23	\$668,026.25

ROSENDAHL CAPITAL FUND

Beginning balance 1/1/23	\$128,987.64
Administrative Fee	(1,360.05)
Interest/Dividends	2,925.59
Unrealized capital gain/loss	14,845.15
Balance as of 12/31/23	\$145,398.33

MERCHANTS BANK

Beginning balance 1/1/23	\$313.93
Interest	4.92
Deposits	1,150.00
Balance as of 12/31/23	\$1,468.85

** This is a summary of the full financial report audited on 1/21/2024 by Sheri Allen and Autumn Wiste.

MISSION ENDOWMENT: TREASURER'S REPORT

As of 11/30/2023

Trinity Lutheran Church Mission Endowment-Treasurer Report-12/31/2023

AW
SA

YEAR	12/31/20	12/31/21	12/31/22	12/31/23
------	----------	----------	----------	----------

In Faith Funds-Thrivent	\$89,930.51	\$104,527.32	\$89,550.74	\$96,388.16
--------------------------------	-------------	--------------	-------------	-------------

— AW SA

Product: Core Growth Portfolio

Allocation: 85% Equities/15% Fixed Income

Note: In Faith Funds is an investment product.

Mission In Faith Funds-ELCA

Fixed Investments	218,292.42	218,292.42	218,292.42	218,292.42
-------------------	------------	------------	------------	------------

AW

Demand Checking	9,924.15	4,753.49	9,556.60	6,807.29
-----------------	----------	----------	----------	----------

AW

Total MIF Funds	228,216.57	223,045.91	227,849.02	225,099.71
-----------------	------------	------------	------------	------------

AW

Total:	\$318,147.08	\$325,129.26	\$317,399.76	\$321,487.90
---------------	---------------------	---------------------	---------------------	---------------------

Product: Fixed Rate Deposit Account – Uninsured – “Annuity Like” Instruments

Interest Earned 2023: \$4,783.01

Rate of Return: 4.184%

Structure: Interest is paid quarterly on Fixed Investments. It is then deposited into demand checking account. We disperse grant money from the MIF Demand Checking Account.

2023 Grantees:	11/02/23 Good Earth Village	2,000
	11/02/23 Lutheran Social Services	1,500
	11/02/23 Houston Co. Food Shelf	1,500
	11/02/23 Lutheran Campus-Winona	1,000
	11/02/23 Lutheran Campus-Mankato	1,000
	11/02/23 Trinity Lutheran Care Team	3,000

Total Grants	\$10,000
---------------------	-----------------

Note: Mission in Faith Funds is the ELCA ministry that specializes in financing capital projects for ELCA congregations and ministries. Often, it is the only way new-start congregations can get the financing they need to purchase or build a permanent church home.

Mark Dokken, Treas.

Audited based on November 2023 bank statement provided.

Shun Allen 1/23/24

Cellisto 1/23/24

SCHOLARSHIP ENDOWMENT: TREASURER'S REPORT

Thrivent: In-Faith	
Balance January 1, 2023	\$419,623.02
Administrative Fee	-\$4064.26
Interest / Dividends	\$9,523.25
Unrealized capitol gain / loss	\$48,309.47
Balance December 31, 2023	\$473,391.48
Thrivent Checking	
Balance January 1, 2023	\$2,743.10
Interest	\$4.76
Checks	-\$1064.16
Balance December 31, 2023	\$1,683.70
Merchants Bank Checking	
Account opened August, 2023	\$15,000.00
Checks	-\$12,750.00
Balance December 31, 2023	\$2,250.00
Merchants Bank Savings	
Balance January 1, 2023	\$15,661.99
Interest	\$84.00
Deposits	\$3,080.16
Withdrawals	-\$15,000.00
Balance December 31, 2023	\$3,826.15
Thrivent	
Balance January 1, 2023	\$2.31
Interest / Dividends	\$0.00
Unrealized capitol gain / loss	\$0.00
Withdrawals	\$0.00
Balance December 31, 2023	\$2.31
Scholarships Awarded	
8 Freshmen	\$4,000.00
8 upperclassmen	\$10,000
Total Scholarships awarded	\$14,000

** This is a summary of the full financial report audited on 1/21/2024 by Sheri Allen and Autumn Wiste.

All Endowments

Annual Report to the Congregation

February 5, 2024

This money that was given to our endowments by Lutheran Brotherhood as the result of a competitive process. The purpose of the grant is to pay for expenses the three endowments incur to increase their value by initiatives that they choose to employ. The goal is to increase their values by 10% annually through those initiatives.

Currently the remainder of that money is held at New Albin Savings Bank in New Albin, IA in accordance with a congregation council directive because NASB's interest on a CD was higher than Merchants Bank paid.

This year there were no requests to cover expenses, so no withdrawals were made from this fund.

Balance on hand January 1, 2023 at Merchants Bank:	\$14,834.33
Interest accrued until February 13:	23.01
Total Balance at Merchants February 13, 2023:	\$14,857.34

On February 13 the money was withdrawn and the account was closed.

On February 13, 2023 the entire amount was invested at New Albin Savings Bank.

A CD that matures February 13, 2024 was purchased in the amount of:	\$12,000.00
The interest rate is 4.06APY. Interest accrued in 2023 is:	390.37

The remainder was deposited into an interest-bearing money market account to give liquidity in the event that any of the endowments incurred expenses to be reimbursed during the year.

Money Market account balance beginning February 13, 2023:	\$2,857.34
Interest accrued on this account during 2023 is:	74.76

Total Balance of All Endowments Fund at NASB December 31, 2024:	\$15,322.47
---	--------------------

Respectfully submitted,



Karen B. Gray

TRINITY WELCA 2023

KITCHEN SAVINGS ACCOUNT

Beginning Balance January 1, 2023	\$2,206.29
Interest	<u>11.04</u>
Ending Balance December 31, 2023	2,217.33

CHECKING ACCOUNT

Beginning Balance January 1, 2023	2,354.68
-----------------------------------	----------

Income

Circles	614.00
Funerals	850.00
Boutique	509.97
Donations	1,060.71
Meatball Dinner	<u>10,663.00</u>

Total Income	\$13,697.68
---------------------	--------------------

Expenses

Layette Supplies	791.04
Baby Care Kits	72.36
School Student Emergency Fund	100.00
Kitchen Supplies	465.10
Cradle Roll	12.60
Minnesota Synod	100.00
Disbursement of Funds	5,750.00
Meatball Dinner	<u>4,178.26</u>

Total Expenses	\$11,469.36
-----------------------	--------------------

Ending Balance December 31, 2023	\$4,583.00
----------------------------------	------------

** This is a summary of the full financial report audited on 1/21/2024 by Sheri Allen and Autumn Wiste.

TRINITY CEMETERY ASSOCIATION: TREASURER'S REPORT

Trinity Lutheran Cemetery Report - 2023			
Checking Account:			
Balance on hand January 1, 2023			\$ 6,204.71
Receipts			
	Donations	\$ 1,150.00	
	Lots Sold	\$ 8,289.00	
	Memorials	\$ 505.00	
	Thrivent Grant Payment	\$ 1,208.00	
	Land Rent (Dan & Kari Alstad)	\$ 1,400.00	
	Grave openings, maint. fees	\$ 1,125.00	
	Total Receipts:	\$ 13,677.00	\$ 13,677.00
Expenses			
	Total Lawn Service	\$ 9,920.00	
	Misc. - grass seed, mower gas	\$ 84.62	
	Postmaster - Stamps	\$ 12.60	
	Buds & Blossoms- Cemetery Flowers	\$ 162.75	
	Buds & Blossoms- Cemetery Flower Care	\$ 150.00	
	James Wilhelmson - Treasurer	\$ 200.00	
	Total Expenses:	\$ 10,529.97	\$ 10,529.97
Checking Account Ending Balance - 12/31/2023			
			\$ 9,351.74
	Outstanding Checks as of 12/31/2023		\$ 42.68
	Bank Balance as of 12/31/2023		\$ 9,394.42
Savings Account:			
Balance on hand January 1, 2023		\$ 2,504.03	
	Interest from Merchants Bank	\$ 12.53	
		\$ 2,516.56	
Savings Account Ending Balance - 12/31/2023			
			\$ 2,516.56
Investments:			
	Thrivent High Yield	\$ 29,670.07	
	Edward Jones	\$ 146,270.34	
		\$ 175,940.41	\$ 175,940.41
Total Upkeep Fund 12/31/23			
			\$ 178,456.97
Total For All Cemetery Funds - 12/31/2023			
			\$ 187,808.71
Lots Sold in Year 2023:	12 lots = \$8289.00		
submitted by Jim Wilhelmson/Sue Wiste			
Audited By:	<i>Shari Allen</i> 1/21/24		
Audited By:	<i>Sue Wiste</i> 1-21-2024		

2024 PROGRAM BUDGET • TOTAL BUDGET FOR 2024: \$332,301

MISSION IN THE WORLD	\$12,508	4% of budget
<u>Goal:</u> Spread the Gospel of Jesus Christ by supporting local, national, and international missions.		
<u>Activities:</u> Financially support ELCA world global missions, disaster relief, world hunger relief, and missionaries in Tanzania.		
<u>Costs:</u> financial gifts		
WORSHIP	\$20,100	6% of budget
<u>Goal:</u> Praise God through vibrant cross-generational worship in our homes, congregation, and community; thereby shaping daily life in the grace, mercy, and peace of God in Christ.		
<u>Activities:</u> Plan and conduct worship services for the congregation and community.		
<u>Costs:</u> worship supplies, organist, pianist, and choir director salaries.		
EDUCATION	\$41,410	13% of budget
<u>Goal:</u> Develop life-long faith formation and Christian discipleship so that people are equipped and supported to share the Good News in Word and deed.		
<u>Activities:</u> Sunday School, youth programs and education, adult education, pastoral, education, senior recognition, youth day camp, and opportunities to attend retreats, seminars, and conventions.		
<u>Costs:</u> Materials, compensation for a Director of Children, Youth & Family Ministry, Release Time teachers, fees for special educational opportunities. Youth budget is separate, but administered through Education Team.		
CARE MINISTRY	\$0	0% of budget
<u>Goal:</u> Listen, respond, care, serve, and pray for others.		
<u>Activities:</u> Supporting the needs of our congregation through prayer shawls, 498-AMEN devotions; food for school programs, our Little Free Pantry, and the Houston County Food Shelf; provide home visits and Christmas Cheer bags.		
<u>Costs:</u> Materials, care packages		
OUTREACH	\$0	0% of budget
<u>Goal:</u> Develop faith forming relationships within our homes, congregation, and community.		
<u>Activities:</u> Empty Bowls Event, assist with the Fall Meatball Dinner, Community Potluck Picnic, welcome visitors and new members, arrange the Fellowship Hosts after weekly worship, and assist other teams with their projects.		
<u>Costs:</u> Items for new member gifts.		
PROPERTY	\$71,274	21% of budget
<u>Goal:</u> Support the work of Trinity by maintaining properties and equipment.		
<u>Activities:</u> Maintain church property and infrastructure.		
<u>Costs:</u> Materials, supplies, equipment, utilities, insurance, building and equipment maintenance, custodian wages.		
FINANCE	\$36,112	11% of budget
<u>Goal:</u> Support the work of Trinity by budgeting for mission and providing bookkeeping services.		
<u>Activities:</u> Bookkeeping services, business affairs.		
<u>Costs:</u> Payroll taxes, interest on loans, bookkeeper wages.		
STEWARDSHIP	\$200	0% of budget
<u>Goal:</u> Support the work of Trinity by fostering stewardship.		
<u>Activities:</u> Twice-yearly giving reports, Servant Sundays.		
<u>Costs:</u> Giving report printing and mailing, Servant Sunday food.		
STAFFING	\$33,376	10% of budget
<u>Goal:</u> Support the work of Trinity by caring for staff.		
<u>Activities:</u> Office administration services, support all staff.		
<u>Costs:</u> Administration support		
COMMUNICATIONS	\$0	0% of budget
<u>Goal:</u> Support the work of Trinity by communicating with the congregation and the public.		
<u>Activities:</u> Church communications, website maintenance.		
<u>Costs:</u> Website maintenance.		
PASTORAL SUPPORT	\$117,321	35% of budget
Salary package and benefits allotted for Lead and Visitation pastors.		

TRINITY ITEMIZED BUDGET

1.16.24		Trinity Lutheran Church Budget Proposal 2024		
		2022 Actual	2023 Budget	2023 Actual as of 12/31/23
INCOME				2024 Budget
Average needed each wk to make budget		Avg 5233 wk	avg 6208 wk	
1	Weekly Offering Envelopes & Online	\$271,576	\$322,796	\$256,847
2	Loose Offerings	\$5,384	\$250	\$4,545
3	Special Festival Offerings	\$45,785	\$11,584	\$36,043
4	Thrivert Choice Dollars Funds	\$2,703	\$2,700	\$3,994
5	Thrivert Charitable Donor Fund			\$5,000
6	Participation & User Fees	\$1,600	\$3,500	\$640
7	Miscellaneous Income & Pass thru	\$2,759	\$2,000	\$4,904
8	Debt Retirement	\$357		
9	Noisy Offering	\$261	\$1,500	
10	Sunday School Offering	\$161		
12	Pandemic Funds			\$59,174
13	Helping Hands	\$7,668		
14	Memorials	\$8,713	\$2,000	\$1,665
15	Total Actual Income	\$346,967	\$346,330	\$367,812
16				
20	World Hunger	\$2,595		\$2,391
21	Outreach special projects			
34	Total Special Accts. Utilization			
35	Pass thru			
36	ADJUSTED TOTAL	349562	346330	370203
37				
38	TOTAL INCOME	349562	346330	\$370,203
39	EXPENSE			
40	Mission in the World	4% 100k/5% 200K/6% 250K/ 7% 300K/8% over 300	4% 100k/5% 200K/6% 250K/ 7% 300K/8% over 300	4% 100K/5% 200K/6% 250K/ 7% over 250 for envelope and online giving only
41	Southeastern Minnesota Synod	\$13,379	\$15,500	\$12,479
44	ELCA World Hunger	\$2,595		\$2,391
45	Food Shelf - Houston County	\$894		\$100
46	ELCA International Disaster/Global Mission	\$13,463		
48	Alternative Giving	\$8,011		\$10,680
49	Habitat for humanity	\$2,075		
50	Root river Conference Dues		\$125	\$250
51	Synod assembly/convention donation	\$1,000	\$1,000	\$1,250
52	Utilize from special accounts			
53	Total Mission in the World	\$41,417	\$16,625	\$27,150
54				
55	Care Ministry		\$500	
56	Little Pantry			\$500
57	Hip Expenses/School backpack program	\$156		\$500
61	Utilize from special accounts		-\$500	-\$1,000
62	TOTAL Care Team	156	0	0
63				
65	Education			
66	Youth programming	\$1,822		\$601
68	Preschool Bible School/VBS		\$2,000	\$500
69	Day Camp	\$597		\$2,212
70	Confirmation Camp			special accts
71	Seniors Recognition/Baccalurate	\$60	\$100	\$100
72	First Communion	\$285	\$350	\$100
73	Adult Education			\$200
74	Confirmation (includes bibles & meals)		\$1,200	\$700
75	Release Time	\$391		\$545
				use special accts

	2022 Actual	2023 Budget	2023 Actual	2024 Budget
76 Sunday School -Wednesday school		\$2,000	\$49	\$250
77 Other/Background checks			\$217	\$300
78 Beary Patch Wages	\$31,328			
79 Beary Patch Wage reimbursement	-\$38,203			
81 Utilize from special accounts				-\$3,000
82 Total Education	(3720)	5650	3767	1150
83				
84 Worship				
87 Choir supplies	\$784			special accts
88 handbell music & supplies		\$800	\$248	special accts
89 Praise band music & supplies				\$100
90 Organ Maintenance & Piano	\$525	\$1,000	\$525	\$1,000
91 Altar beautification & supplies	\$895	\$200	\$528	\$200
92 Communion supplies	\$851	\$500	\$499	
93 Publications (Vibrant faith)/Christ in our home/envelopes	\$1,709	\$1,650	\$2,069	\$1,800
94 Copyright license		\$331		\$350
95 Advertising	\$39	\$500	\$309	\$500
96 Wedding prep & Baptism supplies	\$140	\$100	\$629	\$800
97 Sermon supplies	\$150	\$200	\$114	\$200
98 Media Ministry Programming & Equipment		\$1,000	-\$280	\$1,000
99 Media Ministry/Radio Broadcasting				special accounts
101 Utilize from special accounts				-\$4,500
102 Total Worship	\$5,093	\$6,281	\$4,641	\$1,450
103				
104 Outreach/Care team				all special accounts
105 Fellowship coffee supplies	\$205			
106 Celebration Expenses		\$100		\$100
107 Misc-new member			\$31	\$200
108 Utilize from special accounts	-\$79			-\$300
109 Total Outreach	126.00	100.00	31.13	0.00
110				
111 Support				
112 PROPERTY				
113 Janitorial Supplies	\$894	\$1,000	\$678	\$500
114 Utilities				
115 Church	\$15,061	\$15,000	\$18,043	\$16,000
116 Trinity Center	\$7,390	\$1,500	\$2,969	\$5,000
117 Parsonage #1	\$3,513	\$3,500	\$4,678	\$4,500
118 Insurance	\$12,656	\$15,000	\$14,276	\$18,000
119 Church Improvements/Repairs & Maint	\$2,616	\$2,000	\$2,938	\$2,000
120 Mower service/repairs	\$474	\$250	\$30	\$100
121 Elevator Maintenance & repairs	\$2,435	\$1,700	\$4,426	\$1,700
123 Pest Control	\$910	\$750	\$1,088	\$900
124 Snow Removal (All properties)	\$5,080	\$5,500	\$6,400	\$5,000
125 Lawn services	\$116	\$2,500	\$29	\$2,500
126 Trash Service	\$5,586	\$5,000	\$2,782	\$1,000
127 Parsonage #1 repairs	\$5,094	\$2,000	\$681	\$1,000
128 W End Cemetery care & Maint			\$1,000	\$1,000
129 Culligan supplies & rental - all properties	\$320	\$400	\$320	\$350
130 HVAC system - Trinity	\$10	\$100		\$100
131 Heating & Cooling Trinity Center	\$2,714	\$2,000		\$2,000
132 Trinity center - phone/Projects			\$382	\$4,000
133 Continueing ed - boiler license				\$100
134 Utilize from special accounts				-\$4,000
135 Utilize from special accounts				-\$8,000
136 Sub-total/PROPERTY	\$64,869	\$58,200	\$60,719	\$53,750
137				
138 BUSINESS, MANAGEMENT, FINANCE (BMF)				
139 Web Site Maintenance	\$241	\$500	\$225	\$100
140 Telephone & internet (ERC Funding fees)			\$4,410	

TRINITY ITEMIZED BUDGET

		2022 Actual	2023 Budget	2023 Actual	2024 Budget
141	Office Miscellaneous (furniture & Fixtures)	\$56	\$300		\$300
142	Office Equipment				\$2,000
143	Computer Maintenance & SOFTWARE	\$2,507	\$3,500	\$3,763	\$3,000
144	copier & printers maint	\$7,813	\$7,990	\$6,953	\$6,500
145	Retreats, Seminars, Conventions (non pastoral)		\$100	\$45	\$100
146	Membership fees	\$100	\$200	\$90	\$200
147	Postage	\$1,098	\$1,200	\$576	\$1,200
148	Office Supplies	\$2,642	\$2,200	\$2,148	\$2,000
149	Workmans Compensation Insurance	\$1,850	\$2,500	\$1,708	\$1,710
151	interest on loans	\$604		\$456	\$500
152	finance charges/Bk chgs / online fees	\$911		\$250	\$1,300
153	BANK FEES/online fees	\$258	\$1,300	\$1,164	
154	Utilize from special accounts				
155	Sub-total/BMF	\$18,080	\$19,790	\$21,788	\$18,910
156	Communication				
157	postage newsletter	\$700	\$750	\$950	\$0
158	other exp	\$295			special accounts
159	Total Communication	\$995	\$750	\$950	\$0
160					
161	Staffing				
162	Hiring	\$200	\$150	\$595	\$500
164					
165	Staffing TOTAL	\$200	\$150	\$595	\$500
166					
167	STEWARDSHIP				
168	Giving Statements & postage	\$151	\$300		\$0
169	Meals/ fundraiser (5th Sunday of month)		\$200	\$218	\$200
170	Sub-total/Stewardship	\$151	\$500	\$218	\$200
171	Total Support	\$84,295	\$79,390	\$84,269	\$73,360
172					
173	Miscellaneous Council Expenses				
174	Miscellaneous Expenses - Council		\$1,000	\$133	
176	Synod Assembly (registration, meals, mileage)	\$783			see line 50
177	Utilize from special accounts				
178	Total Miscellaneous	\$783	\$1,000	\$133	\$0
179	Personnel				
180	Choir Director Wages	\$6,784	\$8,073	\$8,673	\$8,235
182	Music Wages (Organist-Sunday)	\$7,533	\$12,680	\$7,242	\$5,896
183	Saturday service			see above	\$1,519
184	Handbell Wages	\$783	see choir director	see above	\$3,000
185	Director of Children Ministries (base)	\$35,235	\$39,500	\$28,865	\$31,200
186	Continuing Education (youth coordinator)	\$209	\$250		\$200
187	Benefit package	\$7,572	\$4,740	\$4,688	\$6,000
188	mileage - youth coordinator	\$973	\$1,200	\$877	\$0
189	cell phone fees/technology fee (youth)	\$322	\$395	\$289	\$360
190	Youth & Family director - 'HSA'	\$900	\$900	see benefits	see above
191	Marlene	\$31,925	\$26,307	\$16,741	\$13,961
192	Marlene cell phone	\$120	\$120	\$143	\$120
193	Stewart	see above	see above	\$19,050	\$19,095
194	Custodian Wages	\$9,183	\$16,500	\$13,663	\$17,524
195	Accountant Fees	\$8,500	\$8,670	\$8,663	\$8,843
196	Payroll Taxes (Employer contribution)	\$12,880	\$14,533	\$8,280	\$8,359
197	Utilize from special accounts-Media Ministry	\$0.00	\$0.00	\$0.00	\$0.00
198	Sub-total Personnel	\$122,919	\$133,868	\$117,174	\$124,313

199		<u>2022 Actual</u>	<u>2023 Budget</u>	<u>2023 Actual</u>	<u>2024 Budget</u>
200	PASTORAL MINISTRY				
201	<i>Compensation</i>		step 9		step 12
202	Lead Pastor Base Salary (includes housing)	\$42,918	\$45,975	\$45,975	\$49,244
203	Housing Equity Account	\$1,757	\$1,780	\$1,757	\$1,757
204	Housing Allowance - no cash outlay	\$13,482	\$14,062	\$14,062	\$14,733
205	Health, Disability	\$13,372	\$14,428	\$15,054	\$15,209
206	Health Ins. - Portico	\$802	see above	see above	see above
207	Disability insurance - portico	see above	see above	see above	see above
208	Basic Group Life - portico	\$584	\$600	\$531	\$282
209	Retiree support	\$6,612	\$6,532	\$6,813	\$7,038
210	Social Security Reimbursement	\$5,915	\$3,714	\$3,714	\$4,897
211	Professional : Sr./Int. Pastor				\$0
212	Continuing Ed.: Sr./Int. Pastor	\$380	\$750	\$1,027	\$500
213	Mileage Reimburse: Sr./Int. Pastor	\$600	\$1,300	\$1,300	\$1,300
214	moving expenses				\$0
215	Cell phone fees - technology fee	\$360	\$480	\$480	\$480
216	home phone, internet & Cable, gas, water, elect	see utilities property	see utilities property	see utilities property	see utilities property
217	Retirement pastor e withholds				
218	HSA - health insurance	\$900	\$900	\$900	\$900
219	subtotal	\$74,200.00	\$76,459.00	\$77,551.48	\$81,607.12
220					
232	Associate Pastor - Lane Zaffke				
233	Base Wage	\$15,640	\$16,166	\$17,656	\$16,489
	Sabbatical Base wages				\$8,245
234	Youth Wages @\$20 hr				\$2,500
235	Housing Allowance - non parsonage-no cash outlay	\$4,331	\$4,453	\$4,453	\$4,947
236	Health/Disability Insurance/retirement	\$6,684	\$6,951	\$6,951	\$6,073
237	Social Security Reimbursement	\$1,553	\$1,500	\$1,680	\$2,462
238	Prof. Exp.: Assoc./Qtr. Time Pastor		\$150		\$0
239	Continuing Ed.: Assoc./QT Pastor	\$95	\$250		\$250
240	Mileage Reimburse: Assoc./QT Pastor	\$408	\$500	\$500	\$504
241	cell phone / technology fee	\$240	\$240	\$240	\$240
242	Sub-total	\$28,951	\$30,210	\$31,480	\$36,763
243	Additional stipend to ¼ time Pastor (only paid when needed)				
244	Funerals>>> \$200 per x 3	\$1,200	\$1,200	\$600	\$600
245	Burials \$50			\$50	\$50
246	Weddings>> \$300 per x 1				\$300
247	guest pastor/pulpit supply				\$200
248	Sub-total	\$1,200	\$1,200	\$650	\$1,150
249					
250	Total Pastoral Compensation	\$104,351	\$107,869	\$109,681	\$119,520
252					
253	Total Personnel	\$227,270	\$241,737	\$226,856	\$243,833
254	Total Pass Threw Expenses			\$53,122	
255	Total Expenses	\$355,420	\$346,330	\$399,970	\$332,301
256	Profit/Loss	(\$5,858)	\$0	(\$29,767)	(\$30,924)
		<u>2022 Actual</u>	<u>2023 Budget</u>	<u>2023 Actual</u>	<u>2024 Budget</u>

Trinity Lutheran Church ANNUAL MEETING AGENDA

February 4, 2024 ▪ 10:30 a.m. - In-person and on Zoom

1. Call to Order – President Kim Kapplinger
2. Opening Prayer and Litany (page 3) – Pastor Elizabeth Hermeier
3. Approval of Minutes from February 5, 2023 Annual Meeting (see page 67)
4. Acceptance of Financial Reports
5. Pastor's remarks
6. Trinity's Mission and Ministry: Presentation of 2024 Proposed Budget and vote
7. Presentation of 2024 Ballot and elections
8. Other business
9. Closing Prayer and Benediction – Pastor Elizabeth Hermeier
10. Adjournment
11. Installation of new and returning team and endowment members.

Gracious God, we give you thanks for these brothers and sisters who have come forward to serve our congregation. Bless them, O God, with wisdom, energy, and joy. Guide them with your Holy Spirit that they may glorify Christ in all they do. Amen

***** Instructions are also on our website where the link is clickable. *****

TO JOIN THE MEETING VIA ZOOM:

You can CALL in to the meeting or join via the ZOOM APP. (It is a free app, download it in your device's app store or visit www.zoom.us/download.)

To call:

- call (312) 626-6799.
- when prompted, enter meeting ID: 816 5749 3253

Via Zoom app or website:

- type in this link: <https://us02web.zoom.us/j/81657493253>
- you will be let into the meeting, please be patient as many may be trying to join at the same time.

To vote:

- on your device you will need to have your video turned on, then you will raise your hand to vote yes or keep your hand down to vote no.

TRINITY LUTHERAN CHURCH

Annual Meeting ▪ February 5, 2023 ▪ in-person and via Zoom ▪ 10:45 a.m.

President Saundy Solum called the meeting to order at 10:45 a.m. Per Trinity Lutheran Church's constitution, 50 people in attendance is needed for a quorum. There were 71 people in attendance, both in person and via Zoom. Dean Wiste served as the parliamentarian. Pastor Elizabeth Hermeier opened the meeting with prayer and led a spoken Litany.

Scott Bingham made a motion to approve the minutes from January 30, 2022 Annual Meeting, seconded by Mark Udstuen, motion carried. Barb Arnold made a motion to accept the financial reports that were audited in January 2023, seconded by Dr. Jim Gray. Steve Nelson recapped the cash-flow in 2022. He shared that we caught up in December so that our General Fund was in the black at the end of the year. We are starting out 2023 in a good place. Motion carried.

Pr. Elizabeth feels extremely thankful and blessed for her call to Trinity Lutheran Church. She is so proud of Trinity in how we respond to the community needs. She is overjoyed at the vibrant fellowship and youth programs. She shared a few highlights that she is so thankful for from 2022:

- Last February, the Council made a motion that the church match what parishioners gave to Lutheran World Relief. Trinity matched \$5,000 to give to LWR.
- Empty Bowls is back.
- The Christmas Concert is back with the Thankful Brass.
- We went from communion pods to Communion at the table.
- Thank you to Saundy for her leadership these past three years that included the pandemic. Also thank you to Dean Wiste, Dan Alstad, Judy Tollefsrud, and Steve Kemp for their time and service as Team Leads and Council members.
- Thanks to the staff - "When you have a good staff and amazing volunteers, it's not a job, it's a love."

Lorilyn Dehning presented the 2023 Budget. This year the budget was prepared with all gifts/offering received. It does not include any Special Accounts that were used in the past. If needed, Special Accounts may be used throughout the year. This allows the budget to reflect the true needs of Trinity Lutheran Church. The salary increases came from what the Synod recommended, and other area's needs. See page 30 in the 2022 Annual Report for the Missions in 2022. Also see page 52 which now reflects the budgets for each program within our congregation. For example, custodian wage is in Property; Children, Youth, & Family Ministry is in Education, and so on. Barb Arnold made a motion to accept the budget as presented, seconded by Terry Holland, motion carried.

Saundy Solum presented the ballot. A Team Lead for Mission in the World team is needed. Rachel Storlie nominated David Storlie for Mission in the World Team Lead, seconded by Scott Solberg. There are delegates needed for the SE MN Synod Assembly. The following people volunteered: Saundy Solum, Terry Holland, Bev Nelson, and Steve Kemp. The Nominating Committee will consist of the council members who are done with their council terms, along with Gary Wilhelmson, Mary Zaffke, and Saundy Solum whom all volunteered. A committee is needed to update the constitution with recommendations from the Synod. Saundy Solum, Barb Arnold, Jacqui Wennes, and Mary Deters all volunteered for this committee. Leonard Myrah would like to amend his term as Stewardship Team Lead from a three-year commitment to a year-by-year commitment due to his age. Jim Gray made a motion to approve the unanimous ballot presented, seconded by Judy Tollefsrud, motion carried.

Other Business – Trinity Center

- Motion from Trinity Congregation Council to offer both parcels (Trinity Center and garage) to the Spring Grove Public school for \$30,000, contingent upon Trinity being able to have Release Time in the updated/new space in perpetuity. Seconded by Rick Sundet. During the discussion, many thoughts and issues were shared regarding Release Time and Trinity Center. The following people shared: Janna Myrah, Saundy Solum, Jim Gray, Gary Wilhelmson, Rachel Udstuen, Michelle Jahnke, Scott Solberg, Andy Allen, Kim Kapplinger, Pr. Elizabeth, Jackie Parker, Laurie Moen, and Leonard Myrah.
- Leonard Myrah made a motion to have an in-depth study to see how to enhance the Release Time program, which includes the Trinity Center, seconded by Alan Roble. Steve Kemp made a motion to call the question, seconded by Steve Nelson, motion carried. A paper ballot was distributed to vote on the motion: 47 yes, 22 no, motion carried.
- Mary Deters made a motion to have the Trinity Lutheran Congregation Council appoint a committee to complete an in-depth study on how to enhance the Release Time program, and to further study Trinity Center. The Council will determine when the committee results will be presented, seconded by Milly Halverson, motion carried.
- Jim Gray made a motion to table the sale of the Trinity Center, seconded by Gary Wilhelmson, motion carried.

A question was raised by Barb Arnold about changing to a 2-year Confirmation course. She wondered why the Council did not vote on the change. The response was that the Education Team makes the education decisions and they informed Council of the change. Council had no concerns with these changes and felt the Education Team and pastoral staff knew what was best.

Pastor Elizabeth Hermeier shared a Closing Prayer and Benediction. Scott Solberg made a motion to adjourn the meeting, seconded by Terry Holland, motion carried. Meeting adjourned at 12:30 p.m.

Submitted by *Michelle Jahnke*

PRESIDENT	SECRETARY	TREASURER	TRINITY LUTHERAN CHURCH 2024 TEAM BALLOT Nominees presented by the Nominating Committee are listed in the ballot with <input type="checkbox"/> in front of their names. Current Team Members are listed <u>without</u> the <input type="checkbox"/> . TERMS: Team Leaders = 3 years, may not succeed themselves on same team. Team Members = 2 years, may succeed themselves two times Endowment Committee = 3 years, can serve no more than 2 consecutive terms Nominating Committee = composed of current year's out-going members of Council plus 3 others elected at Annual Meeting President, Secretary, Treasurer = 3 years, may not succeed themselves Number in () = the year their term began
Kim Kapplinger (23)	<input type="checkbox"/> Lorilyn Dehning (24)	Steve Nelson (22)	
CARE MINISTRY	OUTREACH	HERITAGE ENDOWMENT	
<input type="checkbox"/> Autumn Wiste, lead (24)	<input type="checkbox"/> Barb Gulbranson, lead (24, 1yr term)	Steve Landsom, chair (22)	
<input type="checkbox"/> Roxanne Finnesgard (22)	<input type="checkbox"/> Cheryl Fisch (24)	<input type="checkbox"/> Jeff Engen (21, 24)	
<input type="checkbox"/> Karla St. Mary (24)	<input type="checkbox"/> Jan Kraabel (24)	<input type="checkbox"/> Tom Gerard	
Kathy Anderson (21, 23)	<input type="checkbox"/> Pat Oakes (24)	Dana Kjome (23)	
Joyce Bergrud (23)	<input type="checkbox"/> Kya Peterson (24)	Gary Wilhelmson (22)	
Angie Berns (21, 23)	<input type="checkbox"/> Charity Schroeder (24)		
Kris Bjerke (21, 23)	Jessi Strinmoen (19, 21, 23)	MISSION ENDOWMENT	
Karen Folstad (21, 23)	PROPERTY	Howard Deters, chair (20, 23)	
COMMUNICATIONS	Jerald Oakes, lead (23)	<input type="checkbox"/> Joan Lewis (21, 24)	
Mary Zaffke, lead (22-1yr, 23)	<input type="checkbox"/> Bruce Bergsgaard (22, 24)	<input type="checkbox"/> Laurie Moen (24)	
<input type="checkbox"/> Alisha Solum (24)	<input type="checkbox"/> Joyce Lund (24)	<input type="checkbox"/> Curt Roverud (24)	
<input type="checkbox"/> Rachel Storlie (24)	David Overland (21, 23)	<input type="checkbox"/> Saundy Solum (24)	
Saundy Solum (23)	Kim Sherburne (23)		
Lara Wold Mendez (23)	Richard Storlie (23)	SCHOLARSHIP ENDOWMENT	
EDUCATION	Dean Wiste (23)	Missy Bratland, chair (22)	
<input type="checkbox"/> Heather Gray, lead (24)	STAFFING	Sheri Allen (23)	
<input type="checkbox"/> Jessica Kraus (20, 22, 24)	Betty Dokken, lead (22)	Candyce Deck (20, 23)	
<input type="checkbox"/> Bev Nelson (22, 24)	<input type="checkbox"/> Steve Hagen	Marlene Deschler (19, 22)	
<input type="checkbox"/> Hope Turner (24)	Nancy Gulbranson (22)		2023 SYNOD ASSEMBLY Voting Members 1) 2) 3)
Bonnie Solberg (23)	Danielle Myhre (23)		
Deanna Solum (23)	STEWARDSHIP		
Jessica Sherburne (23)	<input type="checkbox"/> team lead needed		
Tammy Petersen (21, 23)	<input type="checkbox"/> Dan Alstad (24)		
FINANCE	Steve Kemp (23)		
Jacque Wennes, lead (23)	Sara Kroshus (23)		
<input type="checkbox"/> Steve Bergrud (24)	Joyce Landsom (21, 23)		
<input type="checkbox"/> Mark Dokken (24)	Kris Rud (23)		
Barbara Arnold (23)		NOMINATING COMMITTEE	
Kathy Overland (23)	WORSHIP	Taken from floor	1) 2) 3)
Kari Alstad (19, 21, 23)	Lori Wilhelmson, lead (23)		
MISSION IN THE WORLD	<input type="checkbox"/> Terry Holland (24)		
David Storlie, lead (24)	<input type="checkbox"/> Scott Kellogg (24)		
<input type="checkbox"/> Naomi Pollock (20, 22, 24)	<input type="checkbox"/> Rick Sundet (20, 22, 24)		
<input type="checkbox"/> Stewart Storlie (20, 22, 24)	Karen Bingham (21, 23)		
Karen Gray (19, 21, 23)	Lee Hoekstra (23)		
Jen Solberg (21, 23)	Jackie Parker (21, 23)		